



JUNE 2011 LOCAL CLIMATOLOGICAL DATA NOAA, National Climatic Data Center

RICHMOND, VA
RICHMOND INTERNATIONAL AIRPORT (KRIC)
 Lat:37° 30'N Long: 77° 19'W Elev (Ground) 163 Feet
 Time Zone : EASTERN WBAN: 13740 ISSN#: 0198-537X



Date 1	Temperature °F						Deg Days BASE 65°		WEATHER 10	SNOW/ICE ON GND(IN)		PRECIPITATION ON GND(IN)		PRESSURE (INCHES OF HG)		WIND SPEED = MPH DIR = TENS OF DEGREES								Date 24
	MAXIMUM 2	MINIMUM 3	AVERAGE 4	DEP FROM NORMAL 5	AVERAGE DEW PT 6	AVERAGE WET BULB 7	HEATING 8	COOLING 9		0700 LST 11	1300 LST 12	2400 LST 13	2400 LST 14	AVERAGE STATION 15	AVERAGE SEA LEVEL 16	RESULTANT SPEED 17	RES DIR 18	AVERAGE SPEED 19	MAXIMUM					
																			3-SEC		2-MIN			
01	96	71	84	14	71	75	0	19	BR HZ	0		0.0	0.00	29.93	30.10	6.9	22	7.6	22	20	15	21	01	
02	93	68	81	11	54	65	0	16		0		0.0	0.00	29.83	30.03	5.0	33	6.2	24	27	17	28	02	
03	82	57	70*	0	44	56	0	5		0		0.0	0.00	29.93	30.14	6.3	36	7.5	23	02	16	02	03	
04	87	56*	72	2	51	60	0	7		0		0.0	0.00	29.92	30.10	1.8	27	4.6	18	29	15	29	04	
05	83	67	75	5	65	68	0	10	TS TSRA RA DZ BR	0		0.0	0.57	29.80	29.99	2.0	35	4.9	21	27	17	27	05	
06	88	64	76	6	62	67	0	11	BR	0		0.0	0.00	29.81	30.01	2.0	34	4.2	20	36	15	36	06	
07	89	62	76	5	63	68	0	11	BR HZ	0		0.0	0.00	29.83	30.01	3.9	21	4.5	22	22	14	22	07	
08	98	68	83	12	67	72	0	18	BR	0		0.0	0.00	29.78	29.97	1.7	20	2.8	15	21	10	22	08	
09	98	72	85	13	69	75	0	20	BR	0		0.0	0.00	29.75	29.93	3.7	21	4.9	20	22	14	22	09	
10	93	71	82	9	68	72	0	17	TS	0		0.0	0.00	29.76	29.95	0.5	07	4.6	20	10	16	09	10	
11	92	68	80	7	68	71	0	15	TS TSRA RA BR	0		0.0	0.57	29.75	29.92	4.6	17	6.3	47*	05	38*	34	11	
12	91	68	80	6	68	71	0	15	TS RA	0		0.0	T	29.69	29.86	2.6	21	5.2	22	23	20	22	12	
13	81	67	74	0	56	63	0	9	RA	0		0.0	T	29.72	29.92	8.0	36	8.6	30	02	22	01	13	
14	80	64	72	-2	52	61	0	7		0		0.0	0.00	29.73	29.93	7.9	34	8.4	24	31	20	32	14	
15	81	60	71	-3	53	60	0	6		0		0.0	0.00	29.78	29.96	3.3	01	6.6	24	34	12	33	15	
16	85	63	74	0	62	66	0	9	RA BR	0		0.0	0.25	29.73	29.91	9.4	17	9.5	24	15	18	18	16	
17	89	66	78	4	65	69	0	13	TS TSRA RA FG+ BR	0		0.0	0.06	29.73	29.92	4.0	24	5.8	33	32	24	32	17	
18	93	70	82	8	64	71	0	17		0		0.0	0.00	29.70	29.87	5.2	24	5.8	18	22	16	22	18	
19	83	71	77	3	68	71	0	12	RA BR	0		0.0	0.06	29.65	29.83	1.8	33	6.5	16	01	14	33	19	
20	78	66	72	-3	65	67	0	7	RA BR	0		0.0	0.22	29.67	29.87	1.9	06	7.7	28	32	21	36	20	
21	92	66	79	4	68	71	0	14	RA HZ FU	0		0.0	T	29.76	29.94	5.8	20	6.3	25	15	15	22	21	
22	92	74	83	8	70	74	0	18	TS FU	0		0.0	0.00	29.71	29.90	8.1	21	9.1	21	22	16	22	22	
23	90	74	82	7	68	72	0	17	RA	0		0.0	T	29.64	29.81	10.0	23	10.5	30	22	23	22	23	
24	93	70	82	7	64	70	0	17		0		0.0	0.00	29.57	29.75	4.9	26	8.1	24	25	20	23	24	
25	88	67	78	2	60	67	0	13	HZ	0		0.0	0.00	29.67	29.87	3.5	26	5.8	23	23	16	27	25	
26	89	67	78	2	61	67	0	13	RA	0		0.0	0.01	29.78	29.98	0.6	05	3.4	15	21	12	24	26	
27	88	70	79	3	69	72	0	14	RA BR	0		0.0	0.21	29.80	29.99	1.4	04	4.3	20	14	12	20	27	
28	98*	71	85*	9	70	73	0	20	TS TSRA RA BR	0		0.0	1.08	29.73	29.92	5.6	20	7.5	37	23	28	23	28	
29	90	71	81	5	65	70	0	16	RA	0		0.0	T	29.75	29.95	2.2	33	4.9	18	21	13	32	29	
30	87	66	77	0	57	65	0	12		0		0.0	0.00	29.84		5.1	36	5.8	17	34	15	34	30	

**JUNE 2011
RICHMOND, VA**

88.9			67.2			78.1			☼	62.9		68.3		0.0		13.3		< MONTHLY AVERAGES TOTALS >				0.0		3.03		29.76		29.94		1.6		25		6.3		< MONTHLY AVERAGES			
5.3			3.9			4.6				<-----DEPARTURE FROM NORMAL----->																-0.51		SUNSHINE, CLOUD, & VISIBILITY TABLES ON PAGE 3											
DEGREE DAYS										GREATEST 24-HR PRECIPITATION : 1.08 DATE : 28										SEA LEVEL PRESSURE				DATE TIME															
MONTHLY					SEASON TO DATE					GREATEST 24-HR SNOWFALL : 0.0 DATE :					MAXIMUM : 30.20				03 0954																				
TOTAL DEPARTURE					TOTAL DEPARTURE					GREATEST SNOW DEPTH : 0 DATE :					MINIMUM : 29.70				24 1654																				
HEATING :		0		-8		3783		-136		NUMBER OF		MAXIMUM TEMP >= 90 : 14		MINIMUM TEMP <= 32 : 0		PRECIPITATION >= 0.01 INCH : 9																							
COOLING :		398		121		650		224		-> DAYS WITH		MAXIMUM TEMP <= 32 : 0		MINIMUM TEMP <= 0 : 0		PRECIPITATION >= 0.10 INCH : 6																							
										THUNDERSTORMS : 7		HEAVY FOG : 1		SNOWFALL >= 1.0 INCH : 0																									

HOURLY PRECIPITATION

(WATER EQUIVALENT IN INCHES)

RICHMOND, VA (KRIC)
JUNE 2011

WBAN # 13740

Date	FOR HOUR (LST) ENDING AT												Date	FOR HOUR (LST) ENDING AT												Date	Sum of Hourly Data	2400 LST Water Equiv.
	1	2	3	4	5	6	7	8	9	10	11	12		13	14	15	16	17	18	19	20	21	22	23	24			
01													01												01	0.00	0.00	
02													02												02	0.00	0.00	
03													03												03	0.00	0.00	
04													04												04	0.00	0.00	
05			0.17	T	0.09	0.30	T	T	0.01				05												05	0.57	0.57	
06													06												06	0.00	0.00	
07													07												07	0.00	0.00	
08													08												08	0.00	0.00	
09													09												09	0.00	0.00	
10													10												10	0.00	0.00	
11													11				T	0.53	0.02	0.02	T			11	0.57	0.57		
12				T									12		T									12	T	T		
13													13								T	T		13	T	T		
14													14											14	0.00	0.00		
15													15											15	0.00	0.00		
16					T								16			0.03	0.22							16	0.25	0.25		
17	0.05	0.01											17		T		T							17	0.06	0.06		
18													18											18	0.00	0.00		
19													19	0.06	T	T	T							19	0.06	0.06		
20	0.01	0.19		T		T	0.02	T	T	T			20										T	20	0.22	0.22		
21		T											21											21	T	T		
22													22											22	0.00	0.00		
23													23	T										23	T	T		
24													24											24	0.00	0.00		
25													25											25	0.00	0.00		
26													26										T	26	0.01	0.01		
27	T	0.18	0.03	T									27											27	0.21	0.21		
28													28				T	0.32	0.41	0.34	T	0.01		28	1.08	1.08		
29		T	T										29											29	T	T		
30													30											30	0.00	0.00		

* Indicates sum of Hourly and Daily disagree.

MAXIMUM SHORT DURATION PRECIPITATION (See Note)

Time Period (Minutes)	5	10	15	20	30	45	60	80	100	120	150	180
Precipitation (Inches)												
Ending Date												
Ending Time (Hr/Min)												

Note : The hourly and daily precipitation totals are printed in the last 2 columns and hi-lighted in red when they disagree. NWS does not edit ASOS hourly values but may edit daily and monthly totals. Hourly, daily, and monthly totals are printed as reported by the ASOS site.

Date and time are not entered for TRACE amounts.

OBSERVATIONS AT 3-HOURLY INTERVALS

RICHMOND, VA

JUNE 2011

KRIC

WBAN # 13740

HOUR (LST)	SKY COVER	CEILING 100's of FT.	SATELLITE		VISIBILITY (MILES)	WEATHER	TEMPERATURE °F			RELATIVE HUMIDITY (PCT)	WIND		PRESSURE (INCHES, HG)	
			Observation Time (LST)	Eff Cld Amt Oktas			DRY BULB	DEW POINT	WET BULB		SPEED (MPH)	DIRECTION Tens of Deg	STATION	SEA LEVEL
SUNRISE: 0450 JUN 01 SUNSET: 1924														
01	FEW	250			8.00		74	70	71	87	0	00	29.99	30.18
04	CLR	NC			6.00	BR	72	69	70	90	0	00	29.96	30.15
07	CLR	NC			7.00		79	71	74	77	7	26	30.00	30.19
10	CLR	NC			10.00		88	68	74	52	10	21	29.97	30.16
13	FEW	050			10.00		93	70	77	47	9	21	29.92	30.11
16	FEW	050			9.00		94	71	78	47	11	21	29.85	30.03
19	BKN	250			7.00		87	74	78	65	9	20	29.81	30.00
22	FEW	250			8.00		85	72	76	65	10	23	29.83	30.01
SUNRISE: 0450 JUN 02 SUNSET: 1925														
01	CLR	NC			6.00	HZ	81	70	74	69	7	30	29.83	30.01
04	CLR	NC			9.00		73	64	67	74	3	32	29.84	30.03
07	FEW	200			10.00		77	63	68	62	6	01	29.87	30.06
10	FEW	250			10.00		87	52	66	30	9	35	29.89	30.08
13	FEW	250			10.00		91	49	66	24	3	26	29.84	30.03
16	FEW	250			10.00		93	48	66	21	9	29	29.80	29.99
19	SCT	250			10.00		84	49	64	30	5	36	29.81	29.99
22	FEW	100			10.00		74	48	59	40	6	01	29.88	30.06
SUNRISE: 0449 JUN 03 SUNSET: 1925														
01	CLR	NC			10.00		68	45	56	44	6	01	29.89	30.08
04	CLR	NC			10.00		66	44	54	45	10	02	29.93	30.11
07	BKN	250			10.00		66	46	55	49	11	03	29.99	30.18
10	BKN	250			10.00		72	45	57	38	5	02	30.01	30.20
13	BKN	250			10.00		79	37	57	22	7	34	29.96	30.15
16	BKN	250			10.00		80	43	60	27	8	33	29.91	30.10
19	SCT	200			10.00		72	46	58	40	5	03	29.91	30.10
22	FEW	200			10.00		62	50	55	65	0	00	29.96	30.15
SUNRISE: 0449 JUN 04 SUNSET: 1926														
01	CLR	NC			10.00		57	48	52	72	0	00	29.96	30.15
04	CLR	NC			10.00		58	51	54	78	0	00	29.97	30.16
07	FEW	250			10.00		66	51	58	59	6	33	29.99	30.18
10	BKN	250			10.00		78	45	60	31	6	29	29.96	30.15
13	BKN	250			10.00		84	51	64	32	8	24	29.93	30.12
16	OVC	250			10.00		87	47	64	25	6	29	29.88	30.07
19	OVC	250			10.00		82	55	66	40	8	23	29.80	29.99
22	BKN	250			10.00		71	58	63	64	3	11	29.81	30.00
SUNRISE: 0449 JUN 05 SUNSET: 1926														
01	OVC	250			10.00		69	59	63	71	6	13	29.76	29.95
04	OVC	075			10.00		67	63	65	87	3	21	29.77	29.96
07	BKN	200			10.00	-RA	68	65	66	90	3	23	29.81	29.99
10	BKN	150			10.00		73	67	69	82	7	32	29.83	30.02
13	OVC	250			10.00		81	67	72	63	10	02	29.82	30.01
16	OVC	060			10.00		81	66	71	60	7	34	29.81	29.99
19	BKN	250			10.00		77	67	70	71	5	VR	29.81	30.00
22	SCT	250			8.00		68	65	66	90	0	00	29.83	30.02
SUNRISE: 0449 JUN 06 SUNSET: 1927														
01	SCT	250			7.00		67	64	65	90	0	00	29.80	29.99
04	BKN	250			4.00	BR	66	64	65	93	0	00	29.80	29.99
07	SCT	035			6.00	BR	71	67	68	87	6	24	29.83	30.02
10	SCT	028			9.00		80	65	70	60	3	VR	29.84	30.03
13	SCT	047			10.00		83	60	68	46	10	33	29.82	30.01
16	SCT	050			10.00		84	61	69	46	11	35	29.80	29.99
19	FEW	050			10.00		80	54	64	41	3	05	29.80	29.99
22	CLR	NC			10.00		70	64	66	81	5	15	29.85	30.03
SUNRISE: 0448 JUN 07 SUNSET: 1928														
01	CLR	NC			7.00		67	63	65	87	0	00	29.85	30.04
04	CLR	NC			6.00	BR	64	62	63	93	0	00	29.85	30.03
07	BKN	250			6.00	HZ	71	66	68	84	6	22	29.87	30.06
10	OVC	250			10.00		83	61	69	48	8	20	29.87	30.06
13	OVC	250			10.00		87	60	70	40	5	21	29.83	30.02
16	OVC	250			10.00		88	62	71	42	13	24	29.79	29.98
19	OVC	250			10.00		81	67	72	63	6	20	29.77	29.96
22	SCT	250			10.00		74	67	69	79	3	13	29.79	29.97
SUNRISE: 0448 JUN 08 SUNSET: 1928														
01	SCT	250			10.00		72	66	68	82	0	00	29.80	29.98
04	SCT	250			9.00		70	65	67	84	3	19	29.81	29.99
07	SCT	250			8.00		75	66	69	74	6	23	29.83	30.02
10	CLR	NC			10.00		87	67	74	52	3	VR	29.81	30.00
13	FEW	250			10.00		95	65	75	37	3	33	29.77	29.96
16	FEW	070			10.00		95	65	75	37	0	00	29.75	29.94
19	FEW	250			8.00		87	72	77	61	6	18	29.75	29.93
22	FEW	250			8.00		78	71	73	79	5	21	29.78	29.96
SUNRISE: 0448 JUN 09 SUNSET: 1929														
01	CLR	NC			7.00		76	70	72	82	0	00	29.76	29.94
04	CLR	NC			6.00	BR	73	70	71	90	3	20	29.75	29.94
07	FEW	250			7.00		80	70	73	72	6	22	29.79	29.98
10	SCT	250			8.00		92	70	77	49	3	VR	29.77	29.96
13	BKN	250			9.00		97	69	77	40	3	36	29.74	29.93
16	FEW	065			10.00		98	65	75	34	10	20	29.69	29.88
19	SCT	250			10.00		89	70	76	54	7	20	29.69	29.88
22	BKN	250			10.00		82	70	74	67	8	20	29.73	29.91
SUNRISE: 0448 JUN 10 SUNSET: 1929														
01	BKN	250			10.00		82	69	73	65	5	23	29.73	29.92
04	SCT	250			10.00		76	65	69	69	5	36	29.75	29.94
07	FEW	250			10.00		80	67	71	65	9	35	29.78	29.97
10	FEW	250			8.00		88	68	74	52	0	00	29.77	29.96
13	BKN	250			8.00		91	70	76	50	6	02	29.76	29.95
16	BKN	250			10.00		77	68	71	74	7	22	29.74	29.93
19	BKN	250			9.00		78	70	73	77	10	20	29.76	29.95
22	BKN	250			8.00		73	69	70	87	3	20	29.79	29.98
SUNRISE: 0448 JUN 11 SUNSET: 1930														
01	BKN	250			10.00		74	68	70	82	5	26	29.76	29.94
04	SCT	250			7.00		70	68	69	93	3	17	29.74	29.93
07	BKN	150			6.00	BR	73	69	70	87	6	19	29.78	29.97
10	BKN	250			10.00		84	69	74	61	6	22	29.77	29.95
13	BKN	250			10.00		90	70	76	52	7	VR	29.72	29.91
16	SCT	250			7.00		91	71	77	52	13	16	29.67	29.85
19	BKN	065			9.00	-TSRA	71	67	68	87	11	20	29.73	29.92
22	OVC	150			10.00		73	68	70	84	5	17	29.72	29.91
SUNRISE: 0448 JUN 12 SUNSET: 1930														
01	OVC	004			8.00		70	69	69	97	7	19	29.73	29.92
04	BKN	080			10.00		70	67	68	90	6	22	29.70	29.88
07	FEW	150			10.00		73	68	70	84	6	22	29.70	29.89
10	BKN	250			10.00		81	67	72	63	0	00	29.69	29.88
13	SCT	250			10.00		90	68	75	48	3	04	29.66	29.85
16	BKN	250			10.00		86	70	75	59	6	12	29.62	29.81
19	BKN	200			10.00		80	65	70	60	6	31	29.67	29.85
22	OVC	250			10.00		75	67	70	76	0	00	29.68	29.87

OBSERVATIONS AT 3-HOURLY INTERVALS

RICHMOND, VA

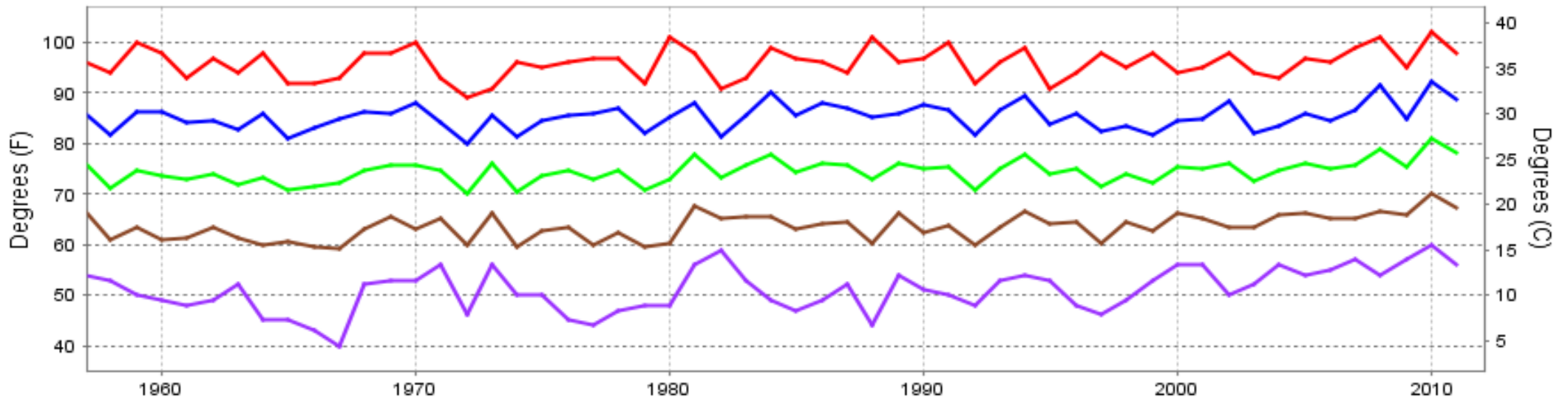
JUNE 2011

KRIC

WBAN # 13740

HOUR (LST)	SKY COVER	CEILING 100's of FT.	SATELLITE		WEATHER	TEMPERATURE °F			WIND		PRESSURE (INCHES, HG)		HOUR (LST)	SKY COVER	CEILING 100's of FT.	SATELLITE		WEATHER	TEMPERATURE °F			WIND		PRESSURE (INCHES, HG)											
			Observation Time (LST)	Eff Cld Amt Oktas		VISIBILITY (MILES)	DRY BULB	DEW POINT	WET BULB	RELATIVE HUMIDITY (PCT)	SPEED (MPH)	DIRECTION Tens of Deg				STATION	SEA LEVEL		Observation Time (LST)	Eff Cld Amt Oktas	VISIBILITY (MILES)	DRY BULB	DEW POINT	WET BULB	RELATIVE HUMIDITY (PCT)	SPEED (MPH)	DIRECTION Tens of Deg	STATION	SEA LEVEL						
																														WEATHER	WEATHER				
SUNRISE: 0448						JUN 13						SUNSET: 1931						SUNRISE: 0448						JUN 19						SUNSET: 1933					
01	BKN	250			10.00		73	67	69	82	3	30	29.66	29.84	01	BKN	150			10.00		78	68	71	71	8	24	29.63	29.81						
04	SCT	250			10.00		70	65	67	84	7	01	29.67	29.86	04	OVC	009			10.00		72	68	69	87	9	26	29.62	29.80						
07	BKN	095			10.00		68	58	62	71	14	02	29.74	29.93	07	BKN	080			10.00		75	69	71	82	8	32	29.63	29.81						
10	BKN	075			10.00		73	53	61	50	14	01	29.77	29.96	10	BKN	120			10.00		80	67	71	65	8	02	29.64	29.83						
13	SCT	250			10.00		79	51	63	38	7	35	29.75	29.94	13	BKN	050			10.00		79	70	73	74	3	28	29.66	29.84						
16	SCT	250			10.00		80	50	63	35	9	34	29.71	29.90	16	BKN	250			10.00		80	71	74	74	8	02	29.65	29.84						
19	FEW	250			10.00		75	53	62	46	8	01	29.73	29.92	19	BKN	250			10.00		76	68	71	76	0	00	29.66	29.85						
22	OVC	120			10.00		71	55	62	57	5	33	29.77	29.96	22	BKN	200			6.00	BR	72	68	69	87	6	12	29.66	29.85						
SUNRISE: 0448						JUN 14						SUNSET: 1931						SUNRISE: 0448						JUN 20						SUNSET: 1933					
01	BKN	090			10.00		69	55	61	61	3	33	29.74	29.93	01	BKN	080			5.00	-RA BR	72	69	70	90	10	12	29.60	29.78						
04	SCT	080			10.00		66	54	59	65	5	27	29.72	29.91	04	OVC	029			4.00	BR	70	68	69	93	16	14	29.55	29.73						
07	FEW	100			10.00		70	53	60	55	8	33	29.75	29.94	07	BKN	032			6.00	-RA BR	72	70	71	93	7	24	29.55	29.74						
10	SCT	250			10.00		75	53	62	46	11	33	29.76	29.95	10	BKN	020			3.00	BR	67	64	65	90	14	01	29.66	29.85						
13	BKN	250			10.00		77	50	61	39	14	33	29.73	29.92	13	BKN	045			10.00		69	64	66	84	5	36	29.77	29.96						
16	BKN	250			10.00		80	50	63	35	11	35	29.71	29.90	16	BKN	250			10.00		77	61	67	58	0	00	29.76	29.94						
19	BKN	100			10.00		74	52	61	46	9	34	29.72	29.91	19	SCT	250			10.00		73	63	67	71	3	10	29.74	29.93						
22	OVC	100			10.00		68	54	60	61	7	01	29.76	29.95	22	SCT	250			10.00		69	62	65	79	8	26	29.80	29.99						
SUNRISE: 0448						JUN 15						SUNSET: 1932						SUNRISE: 0449						JUN 21						SUNSET: 1933					
01	BKN	100			10.00		67	53	59	61	9	33	29.76	29.94	01	OVC	130			10.00		67	63	65	87	3	13	29.77	29.96						
04	CLR	NC			10.00		61	54	57	78	9	36	29.77	29.96	04	OVC	250			10.00		67	64	65	90	0	00	29.79	29.98						
07	CLR	NC			10.00		64	53	58	68	9	35	29.81	30.00	07	BKN	250			10.00		69	65	66	87	6	19	29.80	29.99						
10	SCT	250			10.00		72	53	61	51	8	01	29.81	30.00	10	BKN	250			10.00		79	64	69	60	6	19	29.77	29.96						
13	BKN	250			10.00		77	51	62	40	5	VR	29.79	29.98	13	BKN	250			10.00		88	69	75	53	11	22	29.76	29.95						
16	BKN	250			10.00		79	50	62	36	7	09	29.75	29.94	16	BKN	250			10.00		92	70	77	49	8	21	29.71	29.90						
19	BKN	250			10.00		74	57	64	56	5	18	29.75	29.94	19	OVC	250			10.00		84	74	77	72	7	19	29.72	29.91						
22	BKN	250			10.00		65	56	60	73	3	21	29.76	29.95	22	OVC	250			2.50	HZ	80	72	75	77	7	19	29.74	29.93						
SUNRISE: 0448						JUN 16						SUNSET: 1932						SUNRISE: 0449						JUN 22						SUNSET: 1934					
01	BKN	250			10.00		64	56	59	75	0	00	29.76	29.95	01	BKN	250			2.00	FU	77	72	74	85	9	20	29.71	29.90						
04	OVC	110			10.00		64	56	59	75	3	15	29.75	29.94	04	BKN	250			2.50	FU	77	70	72	79	8	22	29.75	29.94						
07	BKN	110			10.00		69	54	60	59	8	16	29.77	29.96	07	BKN	250			9.00		77	67	70	71	8	23	29.75	29.94						
10	OVC	250			10.00		78	62	68	58	15	17	29.76	29.94	10	BKN	250			10.00		86	67	73	53	9	25	29.74	29.93						
13	BKN	150			10.00		83	64	71	53	14	17	29.72	29.91	13	OVC	250			10.00		89	69	75	52	13	20	29.72	29.91						
16	BKN	150			6.00	-RA BR	76	69	71	79	10	16	29.68	29.86	16	SCT	040			10.00		84	73	76	70	10	15	29.67	29.86						
19	SCT	250			10.00		74	67	69	79	9	17	29.68	29.87	19	OVC	250			10.00		85	73	77	67	8	20	29.65	29.84						
22	BKN	250			10.00		75	67	70	76	10	17	29.70	29.89	22	BKN	250			10.00		78	72	74	82	5	21	29.69	29.87						
SUNRISE: 0448						JUN 17						SUNSET: 1932						SUNRISE: 0449						JUN 23						SUNSET: 1934					
01	OVC	060			8.00	-TSRA	70	65	67	84	6	22	29.73	29.91	01	SCT	250			10.00		79	70	73	74	7	23	29.66	29.84						
04	FEW	250			5.00	BR	68	67	67	97	3	33	29.70	29.89	04	SCT	250			10.00		74	69	71	84	7	20	29.62	29.81						
07	BKN	250			9.00		72	68	69	87	0	00	29.75	29.94	07	OVC	250			10.00		79	67	71	67	13	22	29.64	29.83						
10	SCT	250			10.00		81	67	72	63	3	VR	29.77	29.96	10	OVC	250			10.00		83	68	73	61	11	24	29.65	29.84						
13	SCT	250			10.00		88	60	70	39	6	26	29.72	29.91	13	OVC	150			10.00	-RA	84	67	73	57	11	26	29.65	29.84						
16	BKN	250			10.00		84	59	68	43	6	29	29.72	29.91	16	BKN	250			10.00		86	67	73	53	14	22	29.60	29.78						
19	SCT	250			10.00		73	68	70	84	6	18	29.72	29.91	19	BKN	200			10.00		82	67	72	61	8	24	29.59	29.78						
22	SCT	250			10.00		72	67	69	84	3	21	29.74	29.93	22	BKN	250			10.00		77	68	71	74	10	22	29.63	29.81						
SUNRISE: 0448						JUN 18						SUNSET: 1933						SUNRISE: 0449						JUN 24						SUNSET: 1934					
01	FEW	250			10.00		72	65	68	79	9	24	29.73	29.92	01	SCT	250			10.00		75	68	70	79	7	21	29.60	29.79						
04	BKN	110			10.00		75	62	67	64	6	25	29.73	29.91	04	BKN	200			10.00		72	68	69	87	6	20	29.56	29.75						
07	BKN	250			10.00		78	62	68	58	8	25	29.75	29.94	07	BKN	200			10.00		75	69	71	82	10	22	29.59	29.77						
10	SCT	250			10.00		88	62	71	42	0	00	29.73	29.91	10	SCT	250			10.00		87	66	73	50	10	27	29.58	29.76						
13	BKN	250			10.00		91	64	73	41	10	19	29.67	29.86	13	BKN	200			10.00		89	59	70	36	15	25	29.54	29.73						
16	BKN	250			10.00		92	63	73	38	10	22	29.64	29.83	16	SCT	090			10.00		91	61	71	37	11	29	29.52	29.71						
19	OVC	250			10.00		87	66	73	50	7	29	29.64	29.83	19	SCT	250			10.00		86	60	69	42	3	28	29.54	29.73						
22	BKN	250			10.00		82	68	73	63	0	00	29.63	29.82	22	SCT	250			10.00		78	63	68	60	8	04	29.59	29.78						

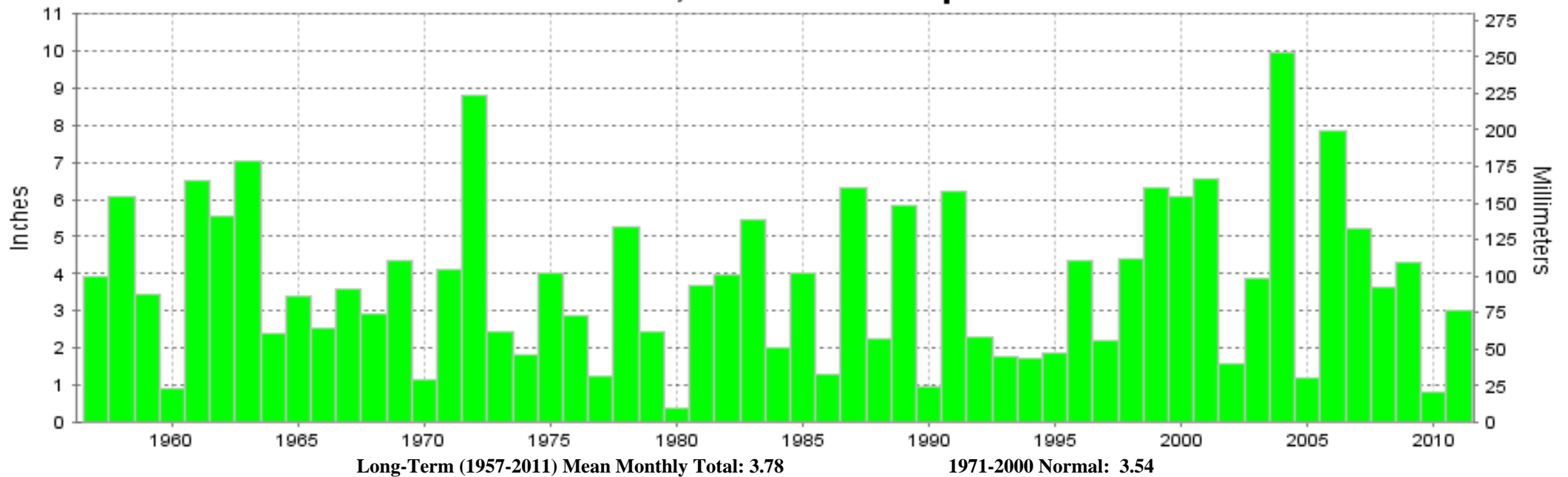
RICHMOND, VA JUNE Temperatures



— Extreme Max
 — Mean Max
 — Mean
 — Mean Min
 — Extreme Min

Long-Term (1957-2011) Mean: 74.4
1971-2000 Normal: 73.5

RICHMOND, VA JUNE Precipitation



Long-Term (1957-2011) Mean Monthly Total: 3.78

1971-2000 Normal: 3.54



JUNE 2011
RICHMOND, VA

LOCAL CLIMATOLOGICAL DATA NOAA, National Climatic Data Center

I certify that this is an official publication of the National Oceanic and Atmospheric Administration (NOAA). It is compiled using information from weather observing sites operated by NOAA-National Weather Service / Department Of Transportation-Federal Aviation Administration and received at the National Climatic Data Center (NCDC), Asheville, North Carolina 28801.

DIRECTOR

NCDC now offers an annual online subscription for the **Edited Local Climatological Data Publication**. When you purchase this subscription service, you will have **immediate online access** to all previous publications back to July 1996 and all publications thereafter until the expiration of the subscription. Your subscription is valid for one year after purchase. **The total cost for online delivery (including back issues) is significantly less than the cost for offline delivery.** To order this and other subscriptions online with your credit card, go to: **www.ncdc.noaa.gov** and choose subscriptions.

We welcome your questions or comments, please contact us at:
Toll Free Number (866) 742-3322 (voice)
Fax Number : (304) 726-4409
TDD : (828) 271-4010
or Email : ncdc.info@noaa.gov
Local Climatological Data is available at www.ncdc.noaa.gov

NCDC Subscription Services Center
310 State Route 956 Building 300
Rocket Center, WV 26726
OFFICIAL BUSINESS, PENALTY FOR PRIVATE USE \$300

FIRST CLASS
POSTAGE AND FEES PAID
NOAA
PERMIT G-19

For address correction, please return a photocopy of this page to Subscription Services indicating changes