



JUNE 2009

LOCAL CLIMATOLOGICAL DATA

NOAA, National Climatic Data Center

RICHMOND, VA
RICHMOND INTERNATIONAL AIRPORT (KRIC)
 Lat:37° 30'N Long: 77° 19'W Elev (Ground) 163 Feet
 Time Zone : EASTERN WBAN: 13740 ISSN#: 0198-537X



Date	Temperature °F						Deg Days BASE 65°		WEATHER	SNOW/ICE ON GND(IN)		PRECIPITATION ON GND(IN)		PRESSURE (INCHES OF HG)		WIND SPEED = MPH DIR = TENS OF DEGREES								Date
	MAXIMUM	MINIMUM	AVERAGE	DEP FROM NORMAL	AVERAGE DEW PT	AVERAGE WET BULB	HEATING	COOLING		0700 LST	1300 LST	2400 LST	2400 LST	AVERAGE STATION	AVERAGE SEA LEVEL	RESULTANT SPEED	RES DIR	AVERAGE SPEED	MAXIMUM					
																			3-SEC	DIR	SPEED	DIR		
1	2	3	4	5	6	7	8	9	10	11	12	13	14	15	16	17	18	19	20	21	22	23	24	
01	80	59	70	0	52	60	0	5				0.0	0.00	29.90	30.10	3.6	13	6.6	18	19	14	20	01	
02	94	63	79	9	62	68	0	14	BR			0.0	0.00	29.84	30.03	3.5	22	6.7	23	02	18	03	02	
03	91	66	79	9	65	68	0	14	TS TSRA RA FG BR			0.0	1.71	29.80	29.98	3.9	18	6.9	32	14	28	14	03	
04	68	63	66	-4	64	65	0	1	RA DZ BR			0.0	0.11	29.77	29.95	5.7	05	6.8	23	04	14	06	04	
05	68	63	66*	-4	63	63	0	1	RA DZ BR			0.0	1.09	29.62	29.81	8.1	04	9.0	23	03	18	03	05	
06	75	61	68	-2	60	63	0	3	BR HZ			0.0	0.00	29.80	30.00	3.2	05	4.9	20	35	10	04	06	
07	82	57*	70	-1	60	64	0	5	BR			0.0	0.00	29.85	30.04	2.7	19	4.2	14	22	12	22	07	
08	88	64	76	5	67	70	0	11	TS BR			0.0	0.00	29.78	29.95	4.8	20	5.8	20	23	13	22	08	
09	90	65	78	6	66	69	0	13	TS TSRA RA BR			0.0	0.25	29.73	29.92	2.5	15	6.0	37	04	28	04	09	
10	85	63	74	1	66	69	0	9				0.0	0.00	29.72	29.91	2.8	22	3.7	13	30	9	21	10	
11	88	70	79	6	69	72	0	14	RA			0.0	0.03	29.66	29.83	7.2	23	7.8	22	23	17	24	11	
12	87	67	77	3	67	70	0	12	RA BR			0.0	0.25	29.60	29.79	1.8	27	5.1	22	19	17	18	12	
13	86	71	79	5	69	72	0	14	TS TSRA RA BR			0.0	T	29.68	29.87	2.9	04	5.4	17	35	12	13	13	
14	84	66	75	1	62	67	0	10				0.0	0.00	29.76	29.96	5.0	02	6.7	18	36	15	36	14	
15	80	66	73	-1	65	68	0	8	RA BR			0.0	0.43	29.84	30.03	2.4	18	2.7	15	21	10	23	15	
16	79	65	72	-2	62	66	0	7				0.0	0.00	29.91	30.12	6.8	13	7.0	21	13	16	14	16	
17	75	65	70	-4	64	66	0	5	RA BR			0.0	0.19	29.93	30.10	8.8	14	9.3	23	14	16	15	17	
18	88	68	78	4	69	72	0	13	RA BR			0.0	T	29.69	29.86	8.3	22	9.7	22	23	18	23	18	
19	86	67	77	3	67	70	0	12	BR HZ			0.0	0.00	29.65	29.83	0.6	17	4.4	15	20	13	21	19	
20	95*	72	84*	9	68	73	0	19	RA BR			0.0	T	29.50	29.67	8.1	29	9.5	36	34	29*	33	20	
21	86	71	79	4	61	67	0	14				0.0	0.00	29.47	29.67	11.1	35	12.2	41*	01	28	36	21	
22	87	67	77	2	62	68	0	12	RA			0.0	0.07	29.51	29.70	9.5	36	9.9	28	04	22	05	22	
23	86	67	77	2	64	69	0	12				0.0	0.00	29.57	29.77	4.6	02	5.3	18	06	13	02	23	
24	88	68	78	3	63	68	0	13				0.0	0.00	29.63	29.82	5.2	01	5.6	22	34	17	02	24	
25	92	69	81	5	62	68	0	16				0.0	0.00	29.65	29.83	3.4	33	5.1	18	34	14	01	25	
26	91	69	80	4	67	72	0	15	TS TSRA RA BR HZ			0.0	0.19	29.59	29.76	4.3	27	6.1	32	35	25	36	26	
27	87	69	78	2	61	67	0	13	TS			0.0	0.00	29.59	29.78	7.6	36	8.0	26	31	20	34	27	
28	84	68	76	0	62	67	0	11	RA			0.0	T	29.55	29.72	1.0	30	5.2	17	15	13	28	28	
29	89	68	79	3	58	66	0	14				0.0	0.00	29.41	29.61	3.6	29	7.0	24	30	18	29	29	
30	92	62	77	0	58	66	0	12				0.0	0.00	29.41	29.59	6.4	25	6.8	24	22	21	24	30	

85.0	66.0	75.5	☼	63.5	67.8	0.0	10.7	< MONTHLY AVERAGES TOTALS >				0.0	4.32	29.68	29.87	0.7	32	6.6	< MONTHLY AVERAGES				
1.4	2.7	2.0		-----DEPARTURE FROM NORMAL -----								0.78	SUNSHINE, CLOUD, & VISIBILITY TABLES ON PAGE 3										
DEGREE DAYS								GREATEST 24-HR PRECIPITATION : 1.73 DATE : 03-04				SEA LEVEL PRESSURE				DATE TIME							
MONTHLY								GREATEST 24-HR SNOWFALL : 0.0 DATE :				MAXIMUM : 30.19				16 2155							
TOTAL DEPARTURE								GREATEST SNOW DEPTH : DATE :				MINIMUM : 29.56				30 1609							
SEASON TO DATE								NUMBER OF -> DAYS WITH				MAXIMUM TEMP >= 90 : 7				MINIMUM TEMP <= 32 : 0				PRECIPITATION >= 0.01 INCH : 10			
HEATING : 0 -8 3729 -190								MAXIMUM TEMP <= 32 : 0				MINIMUM TEMP <= 0 : 0				PRECIPITATION >= 0.10 INCH : 8							
COOLING : 322 45 538 112								THUNDERSTORMS : 6				HEAVY FOG : 0				SNOWFALL >= 1.0 INCH : 0							

JUNE 2009
RICHMOND, VA

HOURLY PRECIPITATION

(WATER EQUIVALENT IN INCHES)

RICHMOND, VA (KRIC)
JUNE 2009

WBAN # 13740

Date	FOR HOUR (LST) ENDING AT												Date	FOR HOUR (LST) ENDING AT												Date	Sum of Hourly Data	2400 LST Water Equiv.
	1	2	3	4	5	6	7	8	9	10	11	12		13	14	15	16	17	18	19	20	21	22	23	24			
01													01												01	0.00	0.00	
02													02												02	0.00	0.00	
03													03												03	1.71	1.71	
04				T	T	T	T					0.02	04	T	0.01		T	0.09	1.29	0.28	0.04			04	0.11	0.11		
05	0.01	0.04	0.02	0.08	0.04	0.08	0.04	0.11	0.04	0.01	0.14	0.04	05			0.15	0.24	0.05	T		0.03	0.04	0.02	T	T	05	1.09	1.09
06													06												06	0.00	0.00	
07													07												07	0.00	0.00	
08													08												08	0.00	0.00	
09													09			T	T			T	0.08	0.17	T		09	0.25	0.25	
10													10												10	0.00	0.00	
11													11											T	0.03	11	0.03	0.03
12	0.08	0.17											12					T							12	0.25	0.25	
13													13						T						13	T	T	
14													14												14	0.00	0.00	
15					T	0.04	0.21	0.09	0.06	0.03			15												15	0.43	0.43	
16													16												16	0.00	0.00	
17					0.01	0.01	T	T	T	T	T	T	17			T	T	0.01	T	T	T	0.01	0.15	T	17	0.19	0.19	
18	T		T	T									18			T									18	T	T	
19													19												19	0.00	0.00	
20													20	T											20	T	T	
21													21												21	0.00	0.00	
22													22									0.06	0.01		22	0.07	0.07	
23													23												23	0.00	0.00	
24													24												24	0.00	0.00	
25													25												25	0.00	0.00	
26													26											0.01	0.18	26	0.19	0.19
27													27												27	0.00	0.00	
28													28					T							28	T	T	
29													29												29	0.00	0.00	
30													30												30	0.00	0.00	

* Indicates sum of Hourly and Daily disagree.

MAXIMUM SHORT DURATION PRECIPITATION (See Note)

Time Period (Minutes)	5	10	15	20	30	45	60	80	100	120	150	180
Precipitation (Inches)	0.35	0.54	0.75	0.79	1.01	1.27	1.44	1.44	1.52	1.61	1.61	1.70
Ending Date	03	03	03	03	03	03	03	03	03	03	03	03
Ending Time (Hr/Min)	1826	1826	1828	1833	1843	1858	1911	1911	1952	2008	2008	2008

Note : The hourly and daily precipitation totals are printed in the last 2 columns and hi-lighted in red when they disagree. NWS does not edit ASOS hourly values but may edit daily and monthly totals. Hourly, daily, and monthly totals are printed as reported by the ASOS site.

Date and time are not entered for TRACE amounts.

REFERENCE NOTES & SUPPLEMENTAL SUMMARIES

* = Extreme for the month (last occurrence if more than one).

T = Trace precipitation amount.

+ = also occurs on earlier date.

FG+ = Heavy fog, visibility .25 miles or less.

BLANK entries denote missing or unreported data.

Resultant wind is the vector sum of the wind speeds and directions divided by the number of observations.

Wind direction is recorded in tens of degrees (2 digits) clockwise from true north. '00' = calm, 'VR' = variable.

Precipitation is for the 24-hour period ending at the time indicated in the column heading.

Water Equivalent of snow on the ground is reported only when the depth is 2 or more inches.

NORMALS ARE FOR THE YEARS 1971-2000

WEATHER NOTATIONS

QUALIFIER	WEATHER PHENOMENA		
DESCRIPTOR	PRECIPITATION	OBSCURATION	OTHER
BC Patches	DZ Drizzle	BR Mist	DS Duststorm
BL Blowing	GR Hail	DU Widespread Dust	FC Funnel Cloud
DR Low Drifting	GS Small Hail and/or Snow Pellets	FG Fog	+FC Tornado Waterspout
FZ Freezing	IC Ice Crystals	FU Smoke	PO Well-Developed Dust/Sand Whirls
MI Shallow	PL Ice Pellets	HZ Haze	
PR Partial	RA Rain	PY Spray	SQ Squalls
SH Shower(s)	SG Snow Grains	SA Sand	SS Sandstorm
TS Thunderstorm	SN Snow	VA Volcanic Ash	GL Glaze
VC In the Vicinity	UP Unkown Precipitation		

Intensity (as indicated on pages 4 to 6):
'+' = Heavy '' = Moderate '-' = Light

RICHMOND, VA JUNE 2009

Ceilometer (30-second) data are used to derive cloudiness at or below 12,000 feet. This cloudiness is the mean cloud cover detected during sunrise to sunset (SR-SS), or midnight to midnight (MN-MN).

Satellite data are used to derive cloudiness above 12,000 feet. Effective Cloud Amount is based on the cloud cover and the transparency of the clouds within the satellite field of view (approx. 31x31 miles).

Sky Condition is based on the sum (not to exceed 8) of the sunrise to sunset cloud cover below and above 12,000 feet. Both ceilometer and satellite data must be present to compute Sky Condition. Clear = 0-2 oktas, Partly Cloudy = 3-6 oktas, Cloudy = 7-8 oktas.

A Heating (Cooling) Degree Day is the difference between the average daily temperature and 65 degrees F. The HDD season begins July 1, the CDD season begins January 1.

Dew Point is the temperature to which the air must be cooled to achieve 100% relative humidity. Wet Bulb is the temperature the air would have if cooled to saturation at constant pressure by evaporation of water into it.

Snow Depth, Snowfall, and Sunshine data may come from nearby sites that the National Weather Service deems Climatologically representative of this site.

ADDITIONAL NOTES:

Station Augmentation-SANDSTON COOP
Lat/Lon:37.54417/-77.27583 Elevation:165
Distance:4 MI Dir:E
Augmented Elements:Temp, Precip, Snow
Equipment:MMS, SRG, Snowboard

Date	SUNSHINE		CLOUDINESS (OKTAS)				VISIBILITY (MILES)		RESERVED
	TOTAL MINUTES	PERCENT POSSIBLE	SR-SS		MN-MN		MINIMUM	MAXIMUM	
			Sky Cover	Satellite	Sky Cover	Satellite			
01							10.00	10.00	
02							6.00	10.00	
03							0.50	10.00	
04							1.50	6.00	
05							1.25	10.00	
06							4.00	10.00	
07							2.00	10.00	
08							4.00	10.00	
09							5.00	10.00	
10							8.00	10.00	
11							7.00	10.00	
12							5.00	10.00	
13							6.00	10.00	
14							8.00	10.00	
15							1.50	10.00	
16							8.00	10.00	
17							5.00	10.00	
18							5.00	10.00	
19							6.00	10.00	
20							4.00	10.00	
21							10.00	10.00	
22							9.00	10.00	
23							10.00	10.00	
24							9.00	10.00	
25							10.00	10.00	
26							6.00	10.00	
27							10.00	10.00	
28							7.00	10.00	
29							9.00	10.00	
30							10.00	10.00	
MONTHLY AVGS							6.26	9.87	
SUNSHINE (Minutes)									
Total : 0			Possible : 26456						
Percent Possible : 0									
NUMBER OF DAYS WITH : SKY CONDITION									
Clear		Partly CLDY		Cloudy		Missing			
MINIMUM VISIBILITY (MILES)									
<= .25		<= 3.0				>= 7.0			
0		5				14			

OBSERVATIONS AT 3-HOURLY INTERVALS

RICHMOND, VA
JUNE 2009

KRIC

WBAN # 13740

HOUR (LST)	SKY COVER	CEILING 100's of FT.	SATELLITE		WEATHER	TEMPERATURE °F			WIND RELATIVE HUMIDITY (PCT)	WIND SPEED (MPH) DIRECTION Tens of Deg	PRESSURE (INCHES, HG)		HOUR (LST)	SKY COVER	CEILING 100's of FT.	SATELLITE		WEATHER	TEMPERATURE °F			WIND RELATIVE HUMIDITY (PCT)	WIND SPEED (MPH) DIRECTION Tens of Deg	PRESSURE (INCHES, HG)					
			Observation Time (LST)	Eff Cld Amt Okta		VISIBILITY (MILES)	DRY BULB	DEW POINT			WET BULB	STATION				SEA LEVEL	Observation Time (LST)		Eff Cld Amt Okta	VISIBILITY (MILES)	DRY BULB			DEW POINT	WET BULB	STATION	SEA LEVEL		
SUNRISE: 0450						JUN 01						SUNSET: 1924																	
01	BKN	090			10.00	68	49	58	51	8	05	29.83	30.02	01	CLR	NC			4.00	BR	61	59	60	93	0	00	29.87	30.06	
04	SCT	060			10.00	62	46	54	56	6	05	29.89	30.08	04	SCT	250			3.00	BR	59	57	58	93	0	00	29.87	30.06	
07	FEW	060			10.00	64	47	55	54	6	07	29.95	30.14	07	BKN	250			4.00	BR	65	62	63	90	6	24	29.90	30.09	
10	SCT	250			10.00	73	49	60	43	8	15	29.96	30.15	10	SCT	250			10.00		75	60	66	60	5	VR	29.90	30.09	
13	BKN	250			10.00	78	50	62	38	6	16	29.94	30.13	13	SCT	045			10.00		79	58	66	49	5	VR	29.85	30.04	
16	SCT	250			10.00	80	54	64	41	9	19	29.90	30.09	16	FEW	050			10.00		81	59	67	47	8	19	29.80	29.99	
19	SCT	250			10.00	72	55	62	55	8	15	29.89	30.08	19	BKN	250			10.00		76	62	67	62	6	19	29.80	29.98	
22	SCT	250			10.00	65	58	61	78	5	19	29.87	30.06	22	SCT	250			10.00		68	63	65	84	3	16	29.84	30.03	
SUNRISE: 0450						JUN 02						SUNSET: 1925																	
01	SCT	250			10.00	64	60	62	87	0	00	29.86	30.05	01	SCT	250			6.00	BR	64	63	63	97	6	15	29.81	30.00	
04	BKN	250			10.00	63	61	62	93	5	20	29.86	30.05	04	FEW	250			5.00	BR	65	64	64	97	3	19	29.79	29.98	
07	BKN	250			9.00	71	65	67	81	9	23	29.88	30.06	07	BKN	250			5.00	BR	69	67	68	93	5	22	29.81	30.00	
10	SCT	250			10.00	84	65	71	53	10	24	29.86	30.05	10	SCT	250			10.00		82	67	72	61	9	22	29.80	29.98	
13	BKN	250			10.00	92	61	72	36	6	26	29.84	30.03	13	SCT	041			10.00		87	68	74	53	8	21	29.75	29.94	
16	FEW	050			10.00	92	62	72	37	14	23	29.79	29.98	16	BKN	080			10.00		87	67	74	52	8	21	29.73	29.92	
19	SCT	250			10.00	85	64	71	49	0	00	29.79	29.97	19	BKN	250			10.00	TS	82	69	73	65	8	19	29.72	29.91	
22	SCT	250			10.00	75	59	65	58	3	08	29.85	30.04	22	OVC	250			10.00		77	68	71	74	6	16	29.75	29.94	
SUNRISE: 0449						JUN 03						SUNSET: 1925																	
01	BKN	250			10.00	70	60	64	71	8	15	29.85	30.04	01	OVC	250			10.00		74	67	69	79	3	18	29.72	29.90	
04	BKN	250			10.00	67	60	63	78	3	08	29.85	30.03	04	CLR	NC			10.00		71	67	68	87	3	19	29.71	29.90	
07	BKN	250			10.00	72	64	67	76	7	18	29.83	30.02	07	SCT	250			10.00		76	68	71	76	3	21	29.73	29.92	
10	BKN	250			10.00	84	67	73	57	9	25	29.83	30.01	10	SCT	250			10.00		83	69	74	63	0	00	29.73	29.92	
13	BKN	250			10.00	90	67	74	47	11	24	29.77	29.95	13	BKN	250			10.00		88	68	74	52	0	00	29.71	29.89	
16	BKN	250			10.00	81	70	74	69	9	18	29.69	29.88	16	OVC	150			10.00	-TSRA	75	65	69	71	6	20	29.69	29.88	
19	OVC	031			0.50	69	69	69	100	13	15	29.76	29.94	19	OVC	200			10.00		73	65	68	76	21	06	29.78	29.97	
22	OVC	250			8.00	68	67	67	97	3	18	29.78	29.97	22	OVC	033			10.00	-RA	66	62	64	87	13	15	29.78	29.97	
SUNRISE: 0449						JUN 04						SUNSET: 1926																	
01	OVC	200			4.00	BR	66	66	66	100	3	21	29.75	29.94	01	BKN	250			10.00		66	64	65	93	3	32	29.74	29.93
04	OVC	050			3.00	-RA BR	68	66	67	93	5	01	29.76	29.95	04	FEW	200			10.00		65	63	64	93	0	00	29.74	29.93
07	OVC	002			2.00	BR	66	65	65	97	8	03	29.79	29.98	07	FEW	250			10.00		68	64	66	87	5	26	29.76	29.95
10	OVC	004			5.00	BR	67	64	65	90	6	07	29.81	30.00	10	BKN	250			10.00		78	67	71	69	5	29	29.75	29.94
13	OVC	004			2.00	BR	66	64	65	93	11	06	29.77	29.96	13	OVC	250			10.00		84	67	73	57	0	00	29.70	29.89
16	OVC	006			2.00	BR	66	63	64	90	7	05	29.75	29.94	16	OVC	250			10.00		84	67	73	57	7	20	29.69	29.88
19	OVC	006			1.50	-RA BR	64	63	63	97	8	06	29.75	29.94	19	OVC	200			10.00		80	70	73	72	5	20	29.69	29.88
22	OVC	005			2.00	-RA BR	64	62	63	93	8	07	29.74	29.93	22	OVC	150			10.00		75	69	71	82	3	20	29.70	29.89
SUNRISE: 0449						JUN 05						SUNSET: 1926																	
01	OVC	003			2.00	-RA BR	63	62	62	97	7	08	29.70	29.89	01	BKN	120			10.00		74	70	71	87	3	22	29.71	29.89
04	OVC	003			2.00	-RA BR	64	63	63	97	9	08	29.63	29.82	04	SCT	120			10.00		71	68	69	90	3	21	29.67	29.86
07	OVC	005			2.00	-RA BR	65	64	64	97	8	08	29.61	29.80	07	SCT	250			10.00		76	70	72	82	5	19	29.69	29.88
10	OVC	012			5.00	-RA BR	66	64	65	93	7	05	29.60	29.78	10	OVC	250			10.00		83	70	74	65	9	21	29.68	29.87
13	OVC	007			10.00		67	64	65	90	10	03	29.58	29.77	13	BKN	250			10.00		86	68	74	55	15	22	29.65	29.83
16	OVC	015			2.00	-RA BR	65	64	64	97	9	03	29.58	29.77	16	OVC	250			10.00		86	68	74	55	13	25	29.59	29.78
19	OVC	009			7.00		64	62	63	93	13	01	29.61	29.80	19	OVC	200			10.00		82	70	74	67	8	24	29.60	29.79
22	OVC	007			10.00		63	61	62	93	9	01	29.69	29.88	22	OVC	130			10.00		75	68	70	79	7	22	29.62	29.80
SUNRISE: 0449						JUN 06						SUNSET: 1927																	
01	OVC	007			10.00		63	61	62	93	6	35	29.71	29.90	01	OVC	150			10.00		70	68	69	93	5	16	29.59	29.78
04	OVC	012			10.00		62	60	61	93	6	02	29.72	29.91	04	OVC	090			10.00		70	69	69	97	6	21	29.57	29.76
07	OVC	010			10.00		63	60	61	90	6	03	29.80	29.99	07	BKN	250			10.00		71	67	68	87	10	27	29.59	29.78
10	OVC	026			10.00		67	59	62	76	8	06	29.82	30.01	10	BKN	250			10.00		82	66	71	58	7	31	29.60	29.78
13	OVC	032			10.00		70	60	64	71	6	05	29.85	30.03	13	BKN	250			10.00		86	63	71	46	3	VR	29.60	29.79
16	BKN	150			9.00		73	59	64	62	0	00	29.82	30.01	16	BKN	250			10.00		85	66	72	53	6	21	29.58	29.76
19	FEW	045			8.00		69	62	65	79	6	14	29.84	30.03	19	BKN	250			10.00		79	60	67	52	6	06	29.62	29.81
22	FEW	250			6.00	BR	64	60	62	87	0	00	29.87	30.06	22	BKN	130			10.00		73	68	70	84	0	00	29.66	29.84

OBSERVATIONS AT 3-HOURLY INTERVALS

RICHMOND, VA

JUNE 2009

KRIC

WBAN # 13740

HOUR (LST)	SKY COVER	CEILING 100's of FT.	SATELLITE		VISIBILITY (MILES)	WEATHER	TEMPERATURE °F			WIND RELATIVE HUMIDITY (PCT)	PRESSURE (INCHES, HG)			
			Observation Time (LST)	Eff Clid Amt Oktas			DRY BULB	DEW POINT	WET BULB		SPEED (MPH)	DIRECTION Tens of Deg	STATION	SEA LEVEL
			SUNRISE: 0448		JUN 13			SUNSET: 1931						
01	FEW	047			10.00		72	68	69	87	6	33	29.66	29.85
04	OVC	100			10.00		72	68	69	87	5	01	29.66	29.84
07	BKN	250			10.00		74	67	69	79	5	04	29.69	29.88
10	OVC	120			10.00		81	69	73	67	6	06	29.71	29.90
13	BKN	200			10.00		84	67	73	57	3	36	29.69	29.88
16	BKN	100			10.00		83	69	74	63	9	13	29.67	29.86
19	BKN	110			10.00	TS	78	70	73	77	3	02	29.68	29.87
22	OVC	140			10.00		76	71	73	85	0	00	29.71	29.89
			SUNRISE: 0448		JUN 14			SUNSET: 1931						
01	BKN	040			8.00		73	70	71	90	8	35	29.70	29.89
04	BKN	055			10.00		69	64	66	84	7	36	29.71	29.90
07	SCT	130			10.00		70	65	67	84	11	01	29.77	29.96
10	SCT	024			10.00		79	65	70	62	11	03	29.80	29.98
13	SCT	200			10.00		83	57	67	41	8	35	29.78	29.97
16	BKN	200			10.00		84	55	66	37	7	02	29.77	29.96
19	BKN	250			10.00		77	58	65	52	3	07	29.78	29.97
22	SCT	250			10.00		70	63	66	79	3	15	29.81	30.00
			SUNRISE: 0448		JUN 15			SUNSET: 1932						
01	OVC	250			8.00		68	65	66	90	6	16	29.80	29.99
04	OVC	006			4.00	BR	69	67	68	93	0	00	29.82	30.01
07	OVC	032			1.50	-RA BR	68	68	68	100	3	14	29.85	30.04
10	OVC	080			5.00	BR	69	67	68	93	0	00	29.88	30.07
13	BKN	250			10.00		75	65	69	71	0	00	29.86	30.05
16	BKN	250			10.00		78	63	68	60	5	19	29.83	30.02
19	OVC	250			10.00		74	65	68	74	3	19	29.82	30.01
22	BKN	250			10.00		69	64	66	84	6	16	29.87	30.06
			SUNRISE: 0448		JUN 16			SUNSET: 1932						
01	BKN	037			8.00		67	65	66	93	3	16	29.87	30.06
04	FEW	049			10.00		66	63	64	90	5	15	29.85	30.04
07	OVC	150			10.00		68	64	66	87	5	13	29.90	30.09
10	OVC	150			10.00		72	64	67	76	8	12	29.92	30.11
13	OVC	150			10.00		77	61	67	58	9	16	29.94	30.13
16	BKN	250			10.00		77	62	68	60	13	13	29.93	30.12
19	BKN	180			10.00		71	61	65	71	13	12	29.96	30.15
22	BKN	140			10.00		67	61	63	81	5	11	30.00	30.19
			SUNRISE: 0448		JUN 17			SUNSET: 1932						
01	BKN	120			10.00		65	62	63	90	7	10	29.97	30.16
04	OVC	120			10.00		65	62	63	90	6	11	29.96	30.15
07	BKN	090			10.00	-RA	66	64	65	93	6	11	29.97	30.16
10	OVC	080			10.00	-RA	69	65	66	87	9	14	29.96	30.15
13	OVC	065			10.00		73	64	67	74	15	15	29.93	30.12
16	OVC	050			10.00		73	65	68	76	11	14	29.87	30.06
19	OVC	040			10.00	-RA	70	66	67	87	10	16	29.84	30.03
22	OVC	070			7.00	-RA	69	66	67	90	13	16	29.82	30.01
			SUNRISE: 0448		JUN 18			SUNSET: 1933						
01	OVC	036			10.00		68	65	66	90	7	17	29.78	29.97
04	BKN	060			10.00	-RA	69	65	66	87	10	20	29.75	29.93
07	BKN	032			10.00		72	68	69	87	9	20	29.73	29.92
10	OVC	016			10.00		77	69	72	76	11	24	29.71	29.90
13	BKN	250			10.00		83	71	75	67	14	22	29.67	29.85
16	BKN	200			10.00		86	71	76	61	14	23	29.60	29.79
19	OVC	250			10.00		83	73	76	72	10	23	29.59	29.78
22	BKN	250			8.00		77	72	74	85	0	00	29.63	29.82

OBSERVATIONS AT 3-HOURLY INTERVALS

RICHMOND, VA

JUNE 2009

KRIC

WBAN # 13740

HOUR (LST)	SKY COVER	CEILING 100's of FT.	SATELLITE		WEATHER	TEMPERATURE °F			WIND		PRESSURE (INCHES, HG)						
			Observation Time (LST)	Eff Cld Amt Oktas		DRY BULB	DEW POINT	WET BULB	RELATIVE HUMIDITY (PCT)	SPEED (MPH)	DIRECTION Tens of Deg	STATION	SEA LEVEL				
SUNRISE: 0450						JUN 25						SUNSET: 1934					
01	FEW	110				72	63	66	73	3	32	29.65	29.83				
04	FEW	090				72	62	66	71	5	30	29.65	29.83				
07	OVC	250				77	61	67	58	5	32	29.68	29.86				
10	BKN	250				84	60	69	44	8	34	29.69	29.87				
13	BKN	250				89	59	70	36	6	01	29.66	29.84				
16	BKN	250				89	59	70	36	9	34	29.62	29.80				
19	SCT	250				85	61	70	45	5	29	29.62	29.80				
22	OVC	250				75	66	69	74	5	16	29.63	29.81				
SUNRISE: 0450						JUN 26						SUNSET: 1934					
01	SCT	250				72	67	69	84	0	00	29.64	29.83				
04	CLR	NC				71	66	68	84	0	00	29.58	29.77				
07	OVC	250				75	67	70	76	6	21	29.60	29.78				
10	OVC	250				86	67	73	53	7	23	29.60	29.79				
13	BKN	200				87	66	73	50	7	25	29.58	29.76				
16	SCT	250				91	66	74	44	9	27	29.52	29.71				
19	BKN	250				84	71	75	65	5	21	29.55	29.74				
22	OVC	150				84	70	74	63	6	26	29.56	29.74				
SUNRISE: 0450						JUN 27						SUNSET: 1934					
01	OVC	150				73	68	70	84	6	33	29.56	29.75				
04	FEW	250				71	67	68	87	0	00	29.57	29.76				
07	CLR	NC				73	66	69	79	9	36	29.61	29.80				
10	FEW	090				81	62	69	53	6	36	29.60	29.78				
13	SCT	055				84	58	68	41	16	36	29.60	29.78				
16	SCT	055				85	57	68	39	15	01	29.60	29.79				
19	FEW	200				80	57	66	45	7	36	29.59	29.78				
22	SCT	250				75	60	66	60	3	34	29.60	29.79				
SUNRISE: 0451						JUN 28						SUNSET: 1934					
01	SCT	250				71	61	65	71	5	33	29.58	29.77				
04	SCT	250				70	61	64	73	6	32	29.57	29.76				
07	BKN	250				72	61	65	68	8	02	29.60	29.78				
10	BKN	250				79	59	67	50	5	35	29.59	29.78				
13	OVC	150				80	61	68	52	3	06	29.56	29.75				
16	BKN	150				83	59	68	44	8	26	29.49	29.68				
19	BKN	150				78	66	70	67	5	12	29.47	29.65				
22	SCT	250				72	66	68	82	5	18	29.45	29.64				
SUNRISE: 0451						JUN 29						SUNSET: 1934					
01	SCT	110				73	65	68	76	5	25	29.41	29.60				
04	SCT	095				71	65	67	81	5	30	29.41	29.59				
07	CLR	NC				74	64	68	71	10	01	29.45	29.64				
10	SCT	250				84	56	67	38	5	04	29.45	29.64				
13	SCT	250				87	51	65	29	11	29	29.42	29.60				
16	SCT	080				88	52	66	29	7	VR	29.39	29.57				
19	FEW	085				80	58	66	47	6	22	29.39	29.58				
22	SCT	090				70	59	63	68	7	22	29.44	29.62				
SUNRISE: 0451						JUN 30						SUNSET: 1934					
01	CLR	NC				67	59	62	76	0	00	29.41	29.59				
04	CLR	NC				65	56	60	73	0	00	29.39	29.57				
07	CLR	NC				71	60	64	68	5	18	29.41	29.60				
10	FEW	250				85	58	68	40	8	23	29.41	29.59				
13	SCT	065				89	57	69	34	15	23	29.39	29.57				
16	SCT	150				88	54	67	31	15	26	29.39	29.57				
19	SCT	250				85	57	67	39	8	27	29.42	29.60				
22	SCT	250				72	62	66	71	0	00	29.45	29.64				

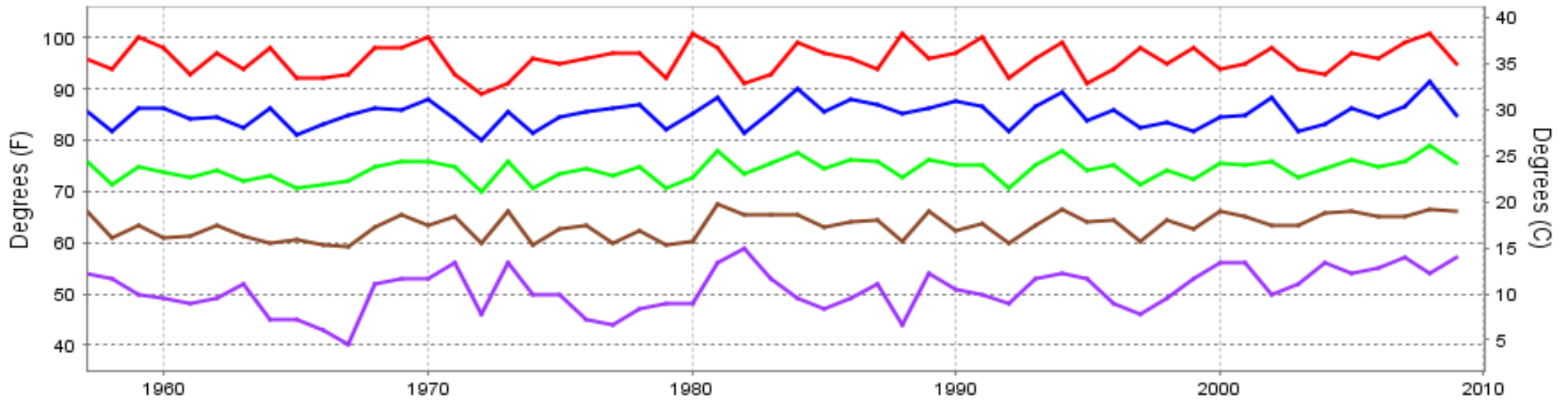
HOUR (LST)	SKY COVER	CEILING 100's of FT.	SATELLITE		WEATHER	TEMPERATURE °F			WIND		PRESSURE (INCHES, HG)		
			Observation Time (LST)	Eff Cld Amt Oktas		DRY BULB	DEW POINT	WET BULB	RELATIVE HUMIDITY (PCT)	SPEED (MPH)	DIRECTION Tens of Deg	STATION	SEA LEVEL

3-HOURLY OBSERVATION NOTES
 Sky Cover is the amount of the sky obscured. CLR or SKC = 0, FEW = 1/8-2/8, SCT = 3/8-4/8, BKN = 5/8-7/8, OVC = 8/8, W = Vertical Visibility = 8/8
 Ceiling is reported in hundreds of feet above ground level for clouds at or below 12,000 feet. NC = No Ceiling detected.
 & = Original observation contained additional weather elements.
 See page 3 for additional notes.

SUMMARY BY HOUR

HOUR (LST)	AVERAGES										RESULTANT WIND (MPH)	
	CEILOMETER	EFF CLD AMT	DRY BULB	DEW POINT	WET BULB	RELATIVE HUMIDITY	PRESSURE (Inches, HG)		VISIBILITY (Miles)	WIND SPEED (MPH)	SPEED	DIRECTION
							STATION	SEA LEVEL				
01			69	64	66	84	29.68	29.87	8.70	5	0	03
02			69	63	66	84	29.68	29.86	8.37	4	1	27
03			68	63	65	85	29.68	29.86	8.50	4	0	04
04			68	63	65	85	29.68	29.86	8.50	4	0	06
05			67	63	65	86	29.68	29.87	8.20	4	1	08
06			68	64	65	85	29.69	29.88	7.93	5	0	29
07			71	64	67	80	29.70	29.89	8.65	7	0	02
08			74	64	68	73	29.71	29.89	9.14	8	0	28
09			77	64	69	66	29.70	29.89	9.37	7	2	27
10			79	64	69	62	29.70	29.89	9.50	7	1	28
11			80	63	69	57	29.70	29.89	9.51	8	1	27
12			82	63	69	54	29.70	29.88	9.73	9	2	27
13			82	63	70	53	29.68	29.87	9.73	9	2	27
14			83	63	70	52	29.67	29.86	9.73	9	1	27
15			83	62	70	52	29.66	29.85	9.47	10	1	27
16			83	63	70	53	29.65	29.84	9.43	10	2	27
17			82	63	70	55	29.64	29.83	9.63	9	1	27
18			80	63	69	58	29.65	29.84	9.45	9	0	28
19			78	64	69	64	29.66	29.85	9.17	8	1	09
20			75	64	68	71	29.67	29.86	9.07	5	1	09
21			73	64	68	75	29.68	29.87	8.96	5	1	08
22			72	64	67	78	29.69	29.87	9.17	4	1	08
23			71	65	67	81	29.69	29.87	8.67	5	0	08
24			70	64	66	83	29.68	29.87	8.53	4	1	28

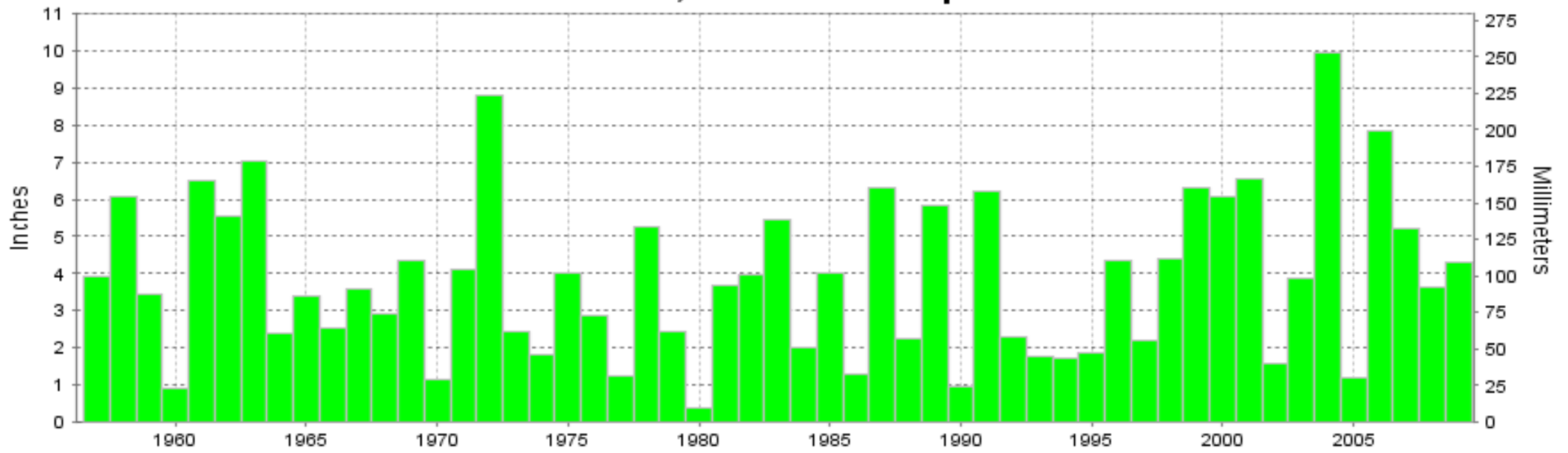
RICHMOND, VA JUNE Temperatures



— Extreme Max
 — Mean Max
 — Mean
 — Mean Min
 — Extreme Min

Long-Term (1957-2009) Mean: 74.2
1971-2000 Normal: 73.5

RICHMOND, VA JUNE Precipitation



Long-Term (1957-2009) Mean Monthly Total: 3.85

1971-2000 Normal: 3.54



JUNE 2009
RICHMOND, VA

LOCAL CLIMATOLOGICAL DATA NOAA, National Climatic Data Center

I certify that this is an official publication of the National Oceanic and Atmospheric Administration (NOAA). It is compiled using information from weather observing sites operated by NOAA-National Weather Service / Department Of Transportation-Federal Aviation Administration and received at the National Climatic Data Center (NCDC), Asheville, North Carolina 28801.

DIRECTOR

NCDC now offers an annual online subscription for the **Edited Local Climatological Data Publication**. When you purchase this subscription service, you will have **immediate online access** to all previous publications back to July 1996 and all publications thereafter until the expiration of the subscription. Your subscription is valid for one year after purchase. **The total cost for online delivery (including back issues) is significantly less than the cost for offline delivery.**

To order this and other subscriptions online with your credit card, go to: www.ncdc.noaa.gov and choose subscriptions.

We welcome your questions or comments, please contact us at:

Toll Free Number (866) 742-3322 (voice)

Fax Number : (304) 726-4409

TDD : (828) 271-4010

or Email : ncdc.info@noaa.gov

Local Climatological Data is available at www.ncdc.noaa.gov

NCDC Subscription Services Center
310 State Route 956 Building 300
Rocket Center, WV 26726
OFFICIAL BUSINESS, PENALTY FOR PRIVATE USE \$300

FIRST CLASS
POSTAGE AND FEES PAID
NOAA
PERMIT G-19

For address correction, please return a photocopy of this page to Subscription Services indicating changes