

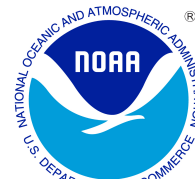


# MAY 2006

## LOCAL CLIMATOLOGICAL DATA

### NOAA, National Climatic Data Center

**RICHMOND, VA**  
**RICHMOND INTERNATIONAL AIRPORT (KRIC)**  
 Lat:37° 30'N Long: 77° 19'W Elev (Ground) 163 Feet  
 Time Zone : EASTERN WBAN: 13740 ISSN#: 0198-537X



Date 1	Temperature °F						Deg Days BASE 65°		WEATHER 10	SNOW/ICE ON GND(IN)		PRECIPITATION ON GND(IN)		PRESSURE (INCHES OF HG)		WIND SPEED = MPH DIR = TENS OF DEGREES								Date 24
	MAXIMUM 2	MINIMUM 3	AVERAGE 4	DEP FROM NORMAL 5	AVERAGE DEW PT 6	AVERAGE WET BULB 7	HEATING 8	COOLING 9		0700 LST 11	1300 LST 12	2400 LST 13	2400 LST 14	AVERAGE STATION 15	AVERAGE SEA LEVEL 16	RESULTANT SPEED 17	RES DIR 18	AVERAGE SPEED 19	MAXIMUM					
																			5-SEC		2-MIN			
01	68	40	54	-7	38	47	11	0			0.0	0.00	30.08	30.25	8.5	04	9.5	23	02	18	06	01		
02	79	39*	59	-2	42	51	6	0			0.0	0.00	29.85	30.01	4.0	24	5.0	18	29	16	27	02		
03	78	53	66	5	51	58	0	1	RA		0.0	0.04	29.70	29.89	6.9	34	8.0	25	34	22	35	03		
04	83	54	69	8	47	57	0	4			0.0	0.00	29.72	29.91	2.2	29	6.9	21	29	16	01	04		
05	82	59	71	10	56	62	0	6	RA		0.0	T	29.62	29.80	1.3	33	6.2	32	34	25	35	05		
06	82	60	71	9	50	59	0	6	BR		0.0	0.00	29.62	29.83	8.2	36	9.0	25	01	21	01	06		
07	63	49	56	-7	42	49	9	0	RA BR		0.0	1.19	29.87	30.08	7.6	04	8.4	21	06	16	01	07		
08	54	48	51*	-12	49	50	14	0	RA DZ BR		0.0	0.50	29.85	30.05	10.3	36	10.4	21	36	17	02	08		
09	70	50	60	-3	44	51	5	0	RA		0.0	T	29.83	30.02	4.4	36	6.2	16	01	13	36	09		
10	78	48	63	-1	51	57	2	0			0.0	0.00	29.71	29.89	3.9	20	6.0	18	24	15	25	10		
11	77	57	67	3	60	63	0	2	TS TSRA RA FG+ FG BR		0.0	1.01	29.49	29.67	6.3	17	8.9	35	26	25	27	11		
12	73	46	60	-4	48	54	5	0	RA		0.0	T	29.52	29.73	2.7	21	6.5	22	21	16	20	12		
13	75	49	62	-2	48	55	3	0	BCFG		0.0	0.00	29.64	29.84	2.7	23	4.6	18	26	13	21	13		
14	69	54	62	-3	53	57	3	0	RA FG+ BCFG BR		0.0	0.30	29.67	29.86	4.9	14	6.9	23	14	20	13	14		
15	71	52	62	-3	50	55	3	0	TSRA RA FG+ BR HZ		0.0	0.03	29.66	29.84	3.7	28	6.2	20	29	16	29	15		
16	70	51	61	-4	47	53	4	0	TSRA RA BR		0.0	0.17	29.57	29.76	7.3	25	9.3	22	26	18	25	16		
17	76	48	62	-3	48	55	3	0			0.0	0.00	29.49	29.67	5.8	24	6.6	23	23	20	23	17		
18	76	53	65	-1	50	57	0	0	RA		0.0	T	29.38	29.56	9.4	23	10.2	31	25	25	24	18		
19	70	55	63	-3	43	52	2	0			0.0	0.00	29.49	29.71	11.5	27	12.7	40*	28	30*	27	19		
20	81	56	69	3	46	56	0	4	RA		0.0	T	29.56	29.75	7.3	27	10.1	30	28	23	28	20		
21	83	47	65	-2	43	55	0	0			0.0	0.00	29.62	29.80	4.4	27	8.1	31	26	21	23	21		
22	74	46	60	-7	39	51	5	0			0.0	0.00	29.78	29.99	5.4	33	8.1	21	28	16	28	22		
23	70	48	59	-9	37	48	6	0			0.0	0.00	29.91	30.11	7.0	01	7.9	22	36	18	33	23		
24	78	46	62	-7	41	52	3	0			0.0	0.00	29.90	30.08	3.4	26	5.6	20	26	16	24	24		
25	84	53	69	0	59	64	0	4			0.0	0.00	29.72	29.88	5.6	19	6.7	20	20	16	20	25		
26	91	70	81*	12	62	68	0	16			0.0	0.00	29.52	29.70	10.8	23	11.5	31	24	23	22	26		
27	85	64	75	6	61	66	0	10			0.0	0.00	29.62	29.84	5.8	34	7.9	23	33	20	34	27		
28	89	63	76	7	60	66	0	11	BR		0.0	0.00	29.90	30.10	4.7	03	6.4	20	01	14	01	28		
29	89	61	75	5	61	66	0	10	FG+ FG MIFG BR HZ		0.0	0.00	29.95	30.14	1.6	15	2.6	15	18	12	16	29		
30	94*	63	79	9	63	69	0	14			0.0	0.00	29.89	30.08	4.2	18	6.1	13	15	10	15	30		
31	90	70	80	10	66	70	0	15			0.0	0.00	29.93	30.12	4.6	17	5.9	16	16	13	14	31		

MAY 2006  
RICHMOND, VA

77.5	53.3	65.4	☼	50.2	57.2	2.7	3.3	< MONTHLY AVERAGES   TOTALS >				0.0	3.24	29.72	29.90	1.9	28	7.6	< MONTHLY AVERAGES				
1.3	-1.3	0.0		-----DEPARTURE FROM NORMAL -----								-0.72	SUNSHINE, CLOUD, & VISIBILITY TABLES ON PAGE 3										
<b>DEGREE DAYS</b>								GREATEST 24-HR PRECIPITATION : 1.69 DATE : 07-08				SEA LEVEL PRESSURE				DATE TIME							
MONTHLY								GREATEST 24-HR SNOWFALL : 0.0 DATE :				MAXIMUM : 30.31				01 0054							
TOTAL DEPARTURE								GREATEST SNOW DEPTH : DATE :				MINIMUM : 29.49				11 1654							
SEASON TO DATE								NUMBER OF -> DAYS WITH				MAXIMUM TEMP >= 90 : 0				MINIMUM TEMP <= 32 : 0				PRECIPITATION >= 0.01 INCH: 7			
TOTAL DEPARTURE								THUNDERSTORMS : 3				MAXIMUM TEMP <= 32 : 0				MINIMUM TEMP <= 0 : 0				PRECIPITATION >= 0.10 INCH: 5			
HEATING : 84 4 3357 -554												HEAVY FOG : 4				SNOWFALL >= 1.0 INCH : 0							
COOLING : 103 -4 154 5																							

# HOURLY PRECIPITATION

(WATER EQUIVALENT IN INCHES)

RICHMOND, VA (KRIC)  
MAY 2006

WBAN # 13740

Date	FOR HOUR (LST) ENDING AT												Date	FOR HOUR (LST) ENDING AT												Date	Sum of Hourly Data	2400 LST Water Equiv.
	1	2	3	4	5	6	7	8	9	10	11	12		13	14	15	16	17	18	19	20	21	22	23	24			
01													01												01	0.00	0.00	
02													02												02	0.00	0.00	
03													03	0.04											03	0.04	0.04	
04													04												04	0.00	0.00	
05													05						T	T	T				05	T	T	
06													06												06	0.00	0.00	
07													07			0.03	0.03	0.04	0.06	0.15	0.16	0.11	0.26	0.33	0.02	07	1.19	1.19
08	0.02	0.04	0.06	0.07	0.03	0.03	0.04	0.05	0.05	0.05	0.01	T	08	T	0.05	T		T	T	T	T	T		08	0.50	0.50		
09					T								09												09	T	T	
10													10												10	0.00	0.00	
11						T	T						11	T	T	0.01	T		0.93	0.02		0.04	0.01		11	1.01	1.01	
12													12									T	T		12	T	T	
13													13												13	0.00	0.00	
14				T	0.02	0.01						T	0.03	14	0.07				T	0.10	0.07	T		14	0.30	0.30		
15														15								0.01	T	0.02	15	0.03	0.03	
16	0.15	0.02											16												16	0.17	0.17	
17													17												17	0.00	0.00	
18													18				T					T	T	T	18	T	T	
19													19												19	0.00	0.00	
20		T											20												20	T	T	
21													21												21	0.00	0.00	
22													22												22	0.00	0.00	
23													23												23	0.00	0.00	
24													24												24	0.00	0.00	
25													25												25	0.00	0.00	
26													26												26	0.00	0.00	
27													27												27	0.00	0.00	
28													28												28	0.00	0.00	
29													29												29	0.00	0.00	
30													30												30	0.00	0.00	
31													31												31	0.00	0.00	

\* Indicates sum of Hourly and Daily disagree.

### MAXIMUM SHORT DURATION PRECIPITATION (See Note)

Time Period (Minutes)	5	10	15	20	30	45	60	80	100	120	150	180
Precipitation (Inches)	0.37	0.55	0.65	0.77	0.86	0.94	0.95	0.95	0.95	0.95	0.95	0.95
Ending Date	11	11	11	11	11	11	11	11	11	11	11	11
Ending Time (Hr/Min)	1738	1739	1739	1742	1750	1801	1805	1805	1805	1805	1805	1805

Note : The hourly and daily precipitation totals are printed in the last 2 columns and hi-lighted in red when they disagree. NWS does not edit ASOS hourly values but may edit daily and monthly totals. Hourly, daily, and monthly totals are printed as reported by the ASOS site.

Date and time are not entered for TRACE amounts.

# REFERENCE NOTES & SUPPLEMENTAL SUMMARIES

\* = Extreme for the month (last occurrence if more than one).

T = Trace precipitation amount.

+ = also occurs on earlier date.

FG+ = Heavy fog, visibility .25 miles or less.

BLANK entries denote missing or unreported data.

Resultant wind is the vector sum of the wind speeds and directions divided by the number of observations.

Wind direction is recorded in tens of degrees (2 digits) clockwise from true north. '00' = calm, 'VR' = variable.

Precipitation is for the 24-hour period ending at the time indicated in the column heading.

Water Equivalent of snow on the ground is reported only when the depth is 2 or more inches.

NORMALS ARE FOR THE YEARS 1971-2000

## WEATHER NOTATIONS

QUALIFIER	WEATHER PHENOMENA		
DESCRIPTOR	PRECIPITATION	OBSCURATION	OTHER
BC Patches	DZ Drizzle	BR Mist	DS Duststorm
BL Blowing	GR Hail	DU Widespread Dust	FC Funnel Cloud
DR Low Drifting	GS Small Hail and/or Snow Pellets	FG Fog	+FC Tornado Waterspout
FZ Freezing	IC Ice Crystals	FU Smoke	PO Well-Developed Dust/Sand Whirls
MI Shallow	PL Ice Pellets	HZ Haze	
PR Partial	RA Rain	PY Spray	SQ Squalls
SH Shower(s)	SG Snow Grains	SA Sand	SS Sandstorm
TS Thunderstorm	SN Snow	VA Volcanic Ash	GL Glaze
VC In the Vicinity	UP Unkown Precipitation		

Intensity (as indicated on pages 4 to 6):  
'+' = Heavy    '' = Moderate    '-' = Light

# RICHMOND, VA MAY 2006

Ceilometer (30-second) data are used to derive cloudiness at or below 12,000 feet. This cloudiness is the mean cloud cover detected during sunrise to sunset (SR-SS), or midnight to midnight (MN-MN).

Satellite data are used to derive cloudiness above 12,000 feet. Effective Cloud Amount is based on the cloud cover and the transparency of the clouds within the satellite field of view (approx. 31x31 miles).

Sky Condition is based on the sum (not to exceed 8) of the sunrise to sunset cloud cover below and above 12,000 feet. Both ceilometer and satellite data must be present to compute Sky Condition. Clear = 0-2 oktas, Partly Cloudy = 3-6 oktas, Cloudy = 7-8 oktas.

A Heating (Cooling) Degree Day is the difference between the average daily temperature and 65 degrees F. The HDD season begins July 1, the CDD season begins January 1.

Dew Point is the temperature to which the air must be cooled to achieve 100% relative humidity. Wet Bulb is the temperature the air would have if cooled to saturation at constant pressure by evaporation of water into it.

Snow Depth, Snowfall, and Sunshine data may come from nearby sites that the National Weather Service deems Climatologically representative of this site.

## ADDITIONAL NOTES:

Date	SUNSHINE		CLOUDINESS (OKTAS)				VISIBILITY (MILES)		RESERVED
	TOTAL MINUTES	PERCENT POSSIBLE	SR-SS		MN-MN		MINIMUM	MAXIMUM	
			Sky Cover	Satellite	Sky Cover	Satellite			
01							10.00	10.00	
02							10.00	10.00	
03							10.00	10.00	
04							9.00	10.00	
05							10.00	10.00	
06							4.00	10.00	
07							2.50	10.00	
08							1.75	10.00	
09							7.00	10.00	
10							10.00	10.00	
11							4.00	10.00	
12							10.00	10.00	
13							10.00	10.00	
14							0.25	10.00	
15							0.25	10.00	
16							5.00	10.00	
17							8.00	10.00	
18							10.00	10.00	
19							10.00	10.00	
20							10.00	10.00	
21							10.00	10.00	
22							10.00	10.00	
23							10.00	10.00	
24							10.00	10.00	
25							10.00	10.00	
26							7.00	10.00	
27							10.00	10.00	
28							8.00	10.00	
29							0.00	10.00	
30							9.00	10.00	
31							10.00	10.00	
MONTHLY AVGS							7.60	10.00	
<b>SUNSHINE (Minutes)</b>									
Total :					Possible :				
Percent Possible :									
<b>NUMBER OF DAYS WITH :</b>									
SKY CONDITION									
Clear		Partly CLDY			Cloudy			Missing	
<b>MINIMUM VISIBILITY (MILES)</b>									
<= .25			<= 3.0				>= 7.0		
3			5				23		



# OBSERVATIONS AT 3-HOURLY INTERVALS

**RICHMOND, VA**

**MAY 2006**

**KRIC**

**WBAN # 13740**

HOUR (LST)	SKY COVER	CEILING 100's of FT.	SATELLITE		WEATHER	TEMPERATURE °F			WIND		PRESSURE (INCHES, HG)		HOUR (LST)	SKY COVER	CEILING 100's of FT.	SATELLITE		WEATHER	TEMPERATURE °F			WIND		PRESSURE (INCHES, HG)																																																																																																																																																																																																								
			Observation Time (LST)	Eff Cld Amt Oktas		VISIBILITY (MILES)	DRY BULB	DEW POINT	WET BULB	RELATIVE HUMIDITY (PCT)	SPEED (MPH)	DIRECTION Tens of Deg				STATION	SEA LEVEL		Observation Time (LST)	Eff Cld Amt Oktas	VISIBILITY (MILES)	DRY BULB	DEW POINT	WET BULB	RELATIVE HUMIDITY (PCT)	SPEED (MPH)	DIRECTION Tens of Deg	STATION	SEA LEVEL																																																																																																																																																																																																			
<b>SUNRISE: 0501</b>						<b>MAY 13</b>						<b>SUNSET: 1908</b>						<b>SUNRISE: 0456</b>						<b>MAY 19</b>						<b>SUNSET: 1913</b>																																																																																																																																																																																																		
01	FEW	100				55	52	53	90	0	00	29.59	29.79	01	BKN	095				62	51	56	67	15	25	29.39	29.57	04	SCT	090			BCFG	50	48	49	93	3	19	29.61	29.80	04	SCT	075				57	42	50	57	9	31	29.41	29.59	07	SCT	250				56	47	51	72	8	27	29.65	29.85	07	SCT	200				56	39	48	53	13	28	29.49	29.68	10	SCT	250				66	46	55	49	7	22	29.68	29.87	10	SCT	180				66	46	55	49	7	22	29.68	29.87	13	SCT	250				71	46	57	41	7	VR	29.66	29.85	13	BKN	180				68	40	54	36	29	28	29.53	29.72	16	BKN	250				75	44	58	33	10	21	29.63	29.82	16	BKN	080				68	41	54	38	15	27	29.53	29.72	19	SCT	250				69	47	57	46	5	17	29.65	29.84	19	SCT	085				67	43	54	42	8	28	29.58	29.77	22	SCT	120				63	50	56	63	0	00	29.68	29.87	22	SCT	110				58	48	53	70	3	11	29.62	29.81	
<b>SUNRISE: 0460</b>						<b>MAY 14</b>						<b>SUNSET: 1909</b>						<b>SUNRISE: 0455</b>						<b>MAY 20</b>						<b>SUNSET: 1914</b>																																																																																																																																																																																																		
01	FEW	110				56	50	53	80	0	00	29.68	29.87	01	OVC	095				57	48	52	72	0	00	29.59	29.78	04	OVC	250				58	50	54	75	12	18	29.67	29.86	04	OVC	250				58	50	54	75	12	18	29.67	29.86	07	SCT	250				60	51	55	72	5	13	29.67	29.86	07	SCT	250				60	51	55	72	5	13	29.67	29.86	10	OVC	250				66	53	59	63	7	14	29.68	29.87	10	FEW	050				66	53	59	63	7	14	29.68	29.87	13	BKN	130			-RA	61	54	57	78	14	14	29.65	29.85	13	SCT	060				61	54	57	78	14	14	29.65	29.85	16	BKN	100				69	55	61	61	13	11	29.64	29.83	16	SCT	075				69	55	61	61	13	11	29.64	29.83	19	OVC	028			-RA BR	60	57	58	90	10	13	29.66	29.85	19	SCT	250				60	57	58	90	10	13	29.66	29.85	22	OVC	080			BR	58	57	57	97	0	00	29.67	29.86	22	FEW	250				58	57	57	97	0	00	29.67	29.86	
<b>SUNRISE: 0459</b>						<b>MAY 15</b>						<b>SUNSET: 1910</b>						<b>SUNRISE: 0455</b>						<b>MAY 21</b>						<b>SUNSET: 1915</b>																																																																																																																																																																																																		
01	OVC	008			0.25	FG	55	54	54	96	3	08	29.66	29.85	01	BKN	250				57	43	50	60	6	05	29.66	29.85	04	OVC	021			BR	55	54	54	96	0	00	29.64	29.83	04	CLR	NC				51	43	47	74	0	00	29.66	29.85	07	BKN	140			BR	56	54	55	93	7	20	29.69	29.88	07	FEW	250				59	47	53	65	0	00	29.69	29.88	10	SCT	150				64	52	57	65	10	24	29.69	29.89	10	SCT	250				64	52	57	65	10	24	29.69	29.89	13	BKN	080				69	45	56	42	10	27	29.66	29.85	13	FEW	250				69	45	56	42	10	27	29.66	29.85	16	SCT	100				71	46	57	41	9	34	29.63	29.82	16	SCT	250				71	46	57	41	9	34	29.63	29.82	19	BKN	085				66	47	56	51	5	31	29.63	29.83	19	SCT	250				66	47	56	51	5	31	29.63	29.83	22	OVC	100			-RA	58	50	54	75	8	31	29.64	29.83	22	CLR	NC				58	50	54	75	8	31	29.64	29.83
<b>SUNRISE: 0458</b>						<b>MAY 16</b>						<b>SUNSET: 1911</b>						<b>SUNRISE: 0454</b>						<b>MAY 22</b>						<b>SUNSET: 1916</b>																																																																																																																																																																																																		
01	OVC	060			5.00	-TSRA BR	54	51	52	90	15	02	29.57	29.76	01	CLR	NC				58	36	48	44	9	36	29.72	29.91	04	SCT	100				53	50	51	90	6	27	29.55	29.74	04	BKN	250				53	36	45	53	3	31	29.77	29.96	07	FEW	120				54	49	51	83	8	27	29.60	29.79	07	BKN	250				57	40	49	53	10	35	29.83	30.02	10	SCT	250				62	44	53	52	10	25	29.60	29.79	10	BKN	250				62	44	53	52	10	25	29.60	29.79	13	BKN	250				67	43	54	42	15	28	29.57	29.76	13	BKN	250				67	43	54	42	15	28	29.57	29.76	16	SCT	250				67	44	55	44	8	22	29.54	29.73	16	SCT	200				67	44	55	44	8	22	29.54	29.73	19	SCT	250				62	49	55	63	7	19	29.56	29.75	19	FEW	200				62	49	55	63	7	19	29.56	29.75	22	SCT	250				56	48	52	75	8	21	29.58	29.77	22	FEW	100				56	48	52	75	8	21	29.58	29.77
<b>SUNRISE: 0457</b>						<b>MAY 17</b>						<b>SUNSET: 1911</b>						<b>SUNRISE: 0453</b>						<b>MAY 23</b>						<b>SUNSET: 1916</b>																																																																																																																																																																																																		
01	CLR	NC			10.00		55	48	51	77	0	00	29.56	29.75	01	SCT	200				53	43	48	69	0	00	29.86	30.06	04	CLR	NC				50	47	48	90	3	18	29.53	29.72	04	CLR	NC				50	39	45	66	9	02	29.91	30.10	07	FEW	085				54	50	52	86	0	00	29.53	29.73	07	CLR	NC				54	38	46	57	12	02	29.96	30.16	10	CLR	NC				69	47	57	46	10	28	29.52	29.70	10	CLR	NC				69	47	57	46	10	28	29.52	29.70	13	SCT	060				75	46	59	36	14	26	29.45	29.64	13	CLR	NC				75	46	59	36	14	26	29.45	29.64	16	SCT	110				75	46	59	36	10	23	29.41	29.59	16	CLR	NC				75	46	59	36	10	23	29.41	29.59	19	BKN	120				70	47	57	44	8	26	29.42	29.61	19	FEW	200				70	47	57	44	8	26	29.42	29.61	22	FEW	090				58	50	54	75	3	16	29.44	29.63	22	CLR	NC				58	50	54	75	3	16	29.44	29.63
<b>SUNRISE: 0457</b>						<b>MAY 18</b>						<b>SUNSET: 1912</b>						<b>SUNRISE: 0453</b>						<b>MAY 24</b>						<b>SUNSET: 1917</b>																																																																																																																																																																																																		
01	FEW	090			10.00		57	49	53	75	6	24	29.41	29.60	01	CLR	NC				46	41	44	83	5	22	29.93	30.12	04	CLR	NC				57	49	53	75	7	27	29.41	29.59	04	CLR	NC				47	40	44	77	0	00	29.91	30.10	07	FEW	200				60	50	55	70	10	24	29.41	29.59	07	BKN	250				60	50	55	70	10	24	29.41	29.59	10	SCT	250				72	49	59	44	18	24	29.36	29.55	10	SCT	250				72	49	59	44	18	24	29.36	29.55	13	BKN	250				76	49	61	39	16	24	29.36	29.54	13	SCT	250				76	49	61	39	16	24	29.36	29.54	16	BKN	250				75	47	59	37	18	24	29.33	29.51	16	BKN	250				75	47	59	37	18	24	29.33	29.51	19	OVC	250				64	51	57	63	8	24	29.34	29.54	19	BKN	250				64	51	57	63	8	24	29.34	29.54	22	OVC	100			-RA	61	54	57	78	5	20	29.39	29.57	22	SCT	250				61	54	57	78	5	20	29.39	29.57

# OBSERVATIONS AT 3-HOURLY INTERVALS

**RICHMOND, VA**  
MAY 2006

KRIC

WBAN # 13740

HOUR (LST)	SKY COVER	CEILING 100's of FT.	SATELLITE		WEATHER	TEMPERATURE °F			WIND SPEED (MPH) DIRECTION Tens of Deg	PRESSURE (INCHES, HG)			
			Observation Time (LST)	Eff Cl'd Amt Oktas		VISIBILITY (MILES)	DRY BULB	DEW POINT		WET BULB	RELATIVE HUMIDITY (PCT)	STATION	SEA LEVEL
<b>SUNRISE: 0452      MAY 25      SUNSET: 1918</b>													
01	FEW	250				56	49	52	78	6	12	29.81	30.00
04	CLR	NC				55	49	52	80	0	00	29.78	29.97
07	BKN	250				62	53	57	73	6	16	29.76	29.95
10	BKN	250				76	61	67	60	9	18	29.74	29.93
13	OVC	150				80	63	69	56	8	23	29.70	29.89
16	BKN	250				83	63	70	51	8	22	29.63	29.82
19	SCT	250				79	65	70	62	6	17	29.58	29.77
22	FEW	250				69	63	65	81	7	19	29.61	29.80
<b>SUNRISE: 0451      MAY 26      SUNSET: 1919</b>													
01	CLR	NC			8.00	72	65	68	79	8	18	29.56	29.75
04	SCT	250			10.00	72	64	67	76	13	21	29.55	29.73
07	SCT	250			10.00	73	61	66	66	10	19	29.55	29.74
10	BKN	250			10.00	79	62	68	56	15	23	29.56	29.74
13	OVC	250			10.00	88	58	69	36	16	25	29.52	29.70
16	BKN	250			10.00	86	60	69	42	13	21	29.45	29.64
19	BKN	200			10.00	84	59	68	43	10	25	29.45	29.64
22	BKN	200			10.00	78	62	68	58	10	24	29.48	29.67
<b>SUNRISE: 0451      MAY 27      SUNSET: 1919</b>													
01	CLR	NC			10.00	72	62	66	71	8	26	29.49	29.68
04	FEW	080			10.00	65	62	63	90	5	19	29.52	29.70
07	SCT	200			10.00	73	62	66	69	8	30	29.59	29.77
10	BKN	100			10.00	78	61	67	56	14	36	29.65	29.83
13	BKN	070			10.00	82	59	68	46	10	35	29.68	29.87
16	BKN	070			10.00	80	60	67	51	12	35	29.69	29.88
19	FEW	070			10.00	78	60	67	54	8	35	29.74	29.93
22	FEW	070			10.00	71	61	65	71	3	32	29.80	29.99
<b>SUNRISE: 0450      MAY 28      SUNSET: 1920</b>													
01	CLR	NC			10.00	67	61	63	81	5	34	29.83	30.02
04	CLR	NC			10.00	65	60	62	84	5	34	29.85	30.04
07	SCT	250			10.00	72	61	65	68	7	01	29.91	30.10
10	FEW	250			10.00	83	62	70	49	8	04	29.95	30.14
13	SCT	060			10.00	85	59	69	41	14	01	29.94	30.13
16	SCT	060			10.00	87	58	69	37	7	VR	29.92	30.11
19	FEW	250			10.00	80	59	67	49	6	08	29.92	30.11
22	CLR	NC			10.00	69	61	64	76	5	13	29.95	30.14
<b>SUNRISE: 0450      MAY 29      SUNSET: 1921</b>													
01	CLR	NC			6.00	64	62	63	93	0	00	29.95	30.14
04	BKN	001			0.25	62	60	61	93	0	00	29.97	30.16
07	VV	001			0.12	66	65	65	97	0	00	30.00	30.19
10	FEW	250			3.00	78	62	68	58	3	VR	29.99	30.18
13	BKN	250			10.00	86	59	69	40	7	VR	29.95	30.14
16	BKN	250			10.00	88	61	71	40	5	VR	29.91	30.10
19	FEW	250			10.00	82	63	70	53	3	16	29.90	30.09
22	CLR	NC			10.00	72	62	66	71	5	13	29.91	30.10
<b>SUNRISE: 0450      MAY 30      SUNSET: 1922</b>													
01	CLR	NC			10.00	67	61	63	81	6	19	29.90	30.09
04	SCT	250			10.00	65	60	62	84	5	21	29.91	30.10
07	FEW	250			10.00	71	61	65	71	8	22	29.93	30.11
10	FEW	250			10.00	83	62	70	49	6	27	29.93	30.12
13	FEW	060			10.00	91	62	72	38	7	VR	29.89	30.08
16	SCT	070			10.00	92	63	73	38	8	14	29.86	30.04
19	BKN	250			10.00	84	68	73	59	8	14	29.85	30.04
22	BKN	250			10.00	78	66	70	67	8	14	29.90	30.09

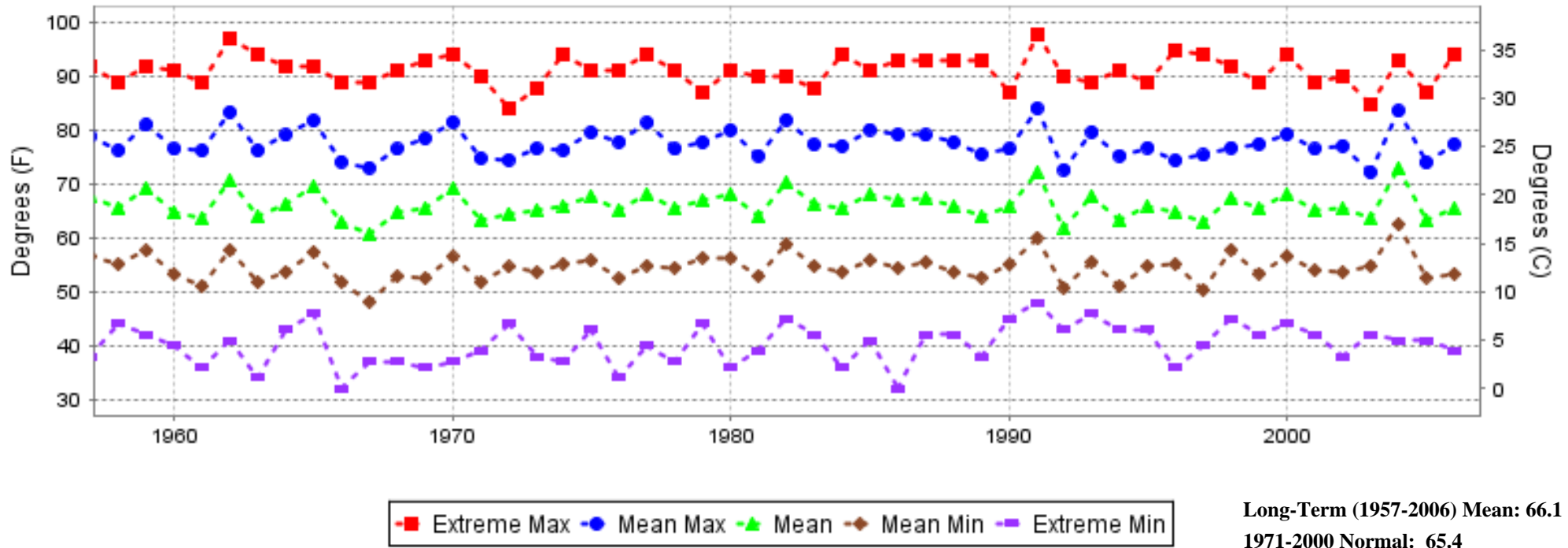
HOUR (LST)	SKY COVER	CEILING 100's of FT.	SATELLITE		WEATHER	TEMPERATURE °F			WIND SPEED (MPH) DIRECTION Tens of Deg	PRESSURE (INCHES, HG)			
			Observation Time (LST)	Eff Cl'd Amt Oktas		VISIBILITY (MILES)	DRY BULB	DEW POINT		WET BULB	RELATIVE HUMIDITY (PCT)	STATION	SEA LEVEL
<b>SUNRISE: 0449      MAY 31      SUNSET: 1922</b>													
01	SCT	060			10.00	74	63	67	69	6	14	29.92	30.10
04	SCT	060			10.00	71	64	67	79	3	16	29.93	30.12
07	BKN	055			10.00	73	66	69	79	0	00	29.98	30.17
10	CLR	NC			10.00	82	65	71	56	3	VR	29.97	30.16
13	SCT	050			10.00	87	64	72	46	5	VR	29.95	30.13
16	SCT	050			10.00	89	66	74	47	8	15	29.90	30.09
19	SCT	250			10.00	82	68	73	63	8	14	29.90	30.09
22	FEW	250			10.00	76	68	71	76	6	16	29.93	30.11

**3-HOURLY OBSERVATION NOTES**  
**Sky Cover is the amount of the sky obscured. CLR or SKC = 0, FEW = 1/8-2/8, SCT = 3/8-4/8, BKN = 5/8-7/8, OVC = 8/8, W = Vertical Visibility = 8/8**  
**Ceiling is reported in hundreds of feet above ground level for clouds at or below 12,000 feet. NC = No Ceiling detected.**  
**& = Original observation contained additional weather elements.**  
**See page 3 for additional notes.**

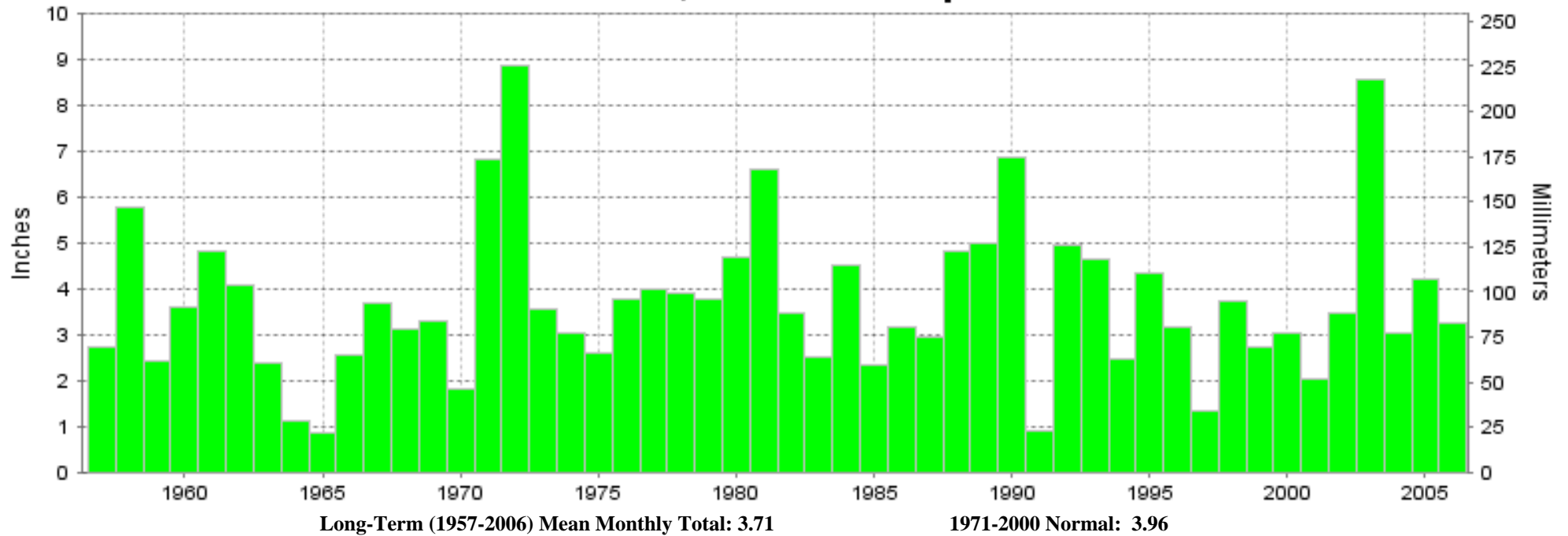
## SUMMARY BY HOUR

HOUR (LST)	AVERAGES								RESULTANT WIND (MPH)			
	CEILOMETER	EFF CLD AMT	DRY BULB	DEW POINT	WET BULB	RELATIVE HUMIDITY	PRESSURE (Inches, HG)		VISIBILITY (Miles)	WIND SPEED (MPH)	SPEED	DIRECTION
							STATION	SEA LEVEL				
01			58	50	54	77	29.71	29.91	9.01	6	1	24
02			57	50	53	78	29.71	29.90	8.91	5	2	24
03			57	50	53	79	29.71	29.90	9.13	5	2	24
04			56	49	52	80	29.71	29.90	8.88	5	2	25
05			55	49	52	81	29.72	29.91	8.77	5	1	23
06			57	50	53	79	29.74	29.93	8.84	5	1	22
07			60	51	55	72	29.74	29.93	9.07	7	2	25
08			64	51	57	63	29.75	29.94	9.33	9	3	26
09			67	50	58	56	29.75	29.94	9.48	10	3	26
10			70	50	59	50	29.74	29.93	9.55	10	4	26
11			72	49	59	46	29.74	29.93	9.77	11	5	26
12			73	49	60	45	29.72	29.91	9.67	11	5	26
13			74	49	60	43	29.71	29.90	9.74	11	5	26
14			75	49	60	42	29.70	29.88	9.94	10	5	26
15			76	49	61	41	29.68	29.87	9.94	10	4	26
16			76	49	61	43	29.67	29.86	10.00	10	3	26
17			75	50	61	44	29.67	29.86	10.00	10	4	26
18			74	50	60	46	29.67	29.86	9.61	9	2	26
19			70	51	59	54	29.68	29.87	9.55	8	1	23
20			66	52	58	62	29.69	29.88	9.81	6	2	11
21			64	52	58	67	29.71	29.90	9.87	5	2	12
22			63	52	57	70	29.72	29.91	9.60	5	1	21
23			61	52	56	72	29.72	29.91	9.71	5	1	20
24			60	52	56	75	29.72	29.91	9.52	5	2	24

# RICHMOND, VA MAY Temperatures



# RICHMOND, VA MAY Precipitation





MAY 2006  
RICHMOND, VA

# LOCAL CLIMATOLOGICAL DATA NOAA, National Climatic Data Center

*I certify that this is an official publication of the National Oceanic and Atmospheric Administration (NOAA). It is compiled using information from weather observing sites operated by NOAA-National Weather Service / Department Of Transportation-Federal Aviation Administration and received at the National Climatic Data Center (NCDC), Asheville, North Carolina 28801.*

DIRECTOR

NCDC now offers an annual online subscription for the **Edited Local Climatological Data Publication**. When you purchase this subscription service, you will have **immediate online access** to all previous publications back to July 1996 and all publications thereafter until the expiration of the subscription. Your subscription is valid for one year after purchase. **The total cost for online delivery (including back issues) is significantly less than the cost for offline delivery.** To order this and other subscriptions online with your credit card, go to: [www.ncdc.noaa.gov](http://www.ncdc.noaa.gov) and choose subscriptions.

We welcome your questions or comments, please contact us at:

Toll Free Number (866) 742-3322 (voice)

Fax Number : (304) 726-4409

TDD : (828) 271-4010

or Email : [ncdc.info@noaa.gov](mailto:ncdc.info@noaa.gov)

Local Climatological Data is available at [www.ncdc.noaa.gov](http://www.ncdc.noaa.gov)

United States  
Department of Commerce

National Oceanic and  
Atmospheric Administration

National Environmental Satellite  
Atmospheric Administration

For address correction, please return a photocopy of this page to Subscription Services indicating changes

NCDC Subscription Services Center  
310 State Route 956 Building 300  
Rocket Center, WV 26726

OFFICIAL BUSINESS, PENALTY FOR PRIVATE USE \$300

FIRST CLASS  
POSTAGE AND FEES PAID  
NOAA  
PERMIT G-19