



April 16, 2011 - Tornado Damage Survey

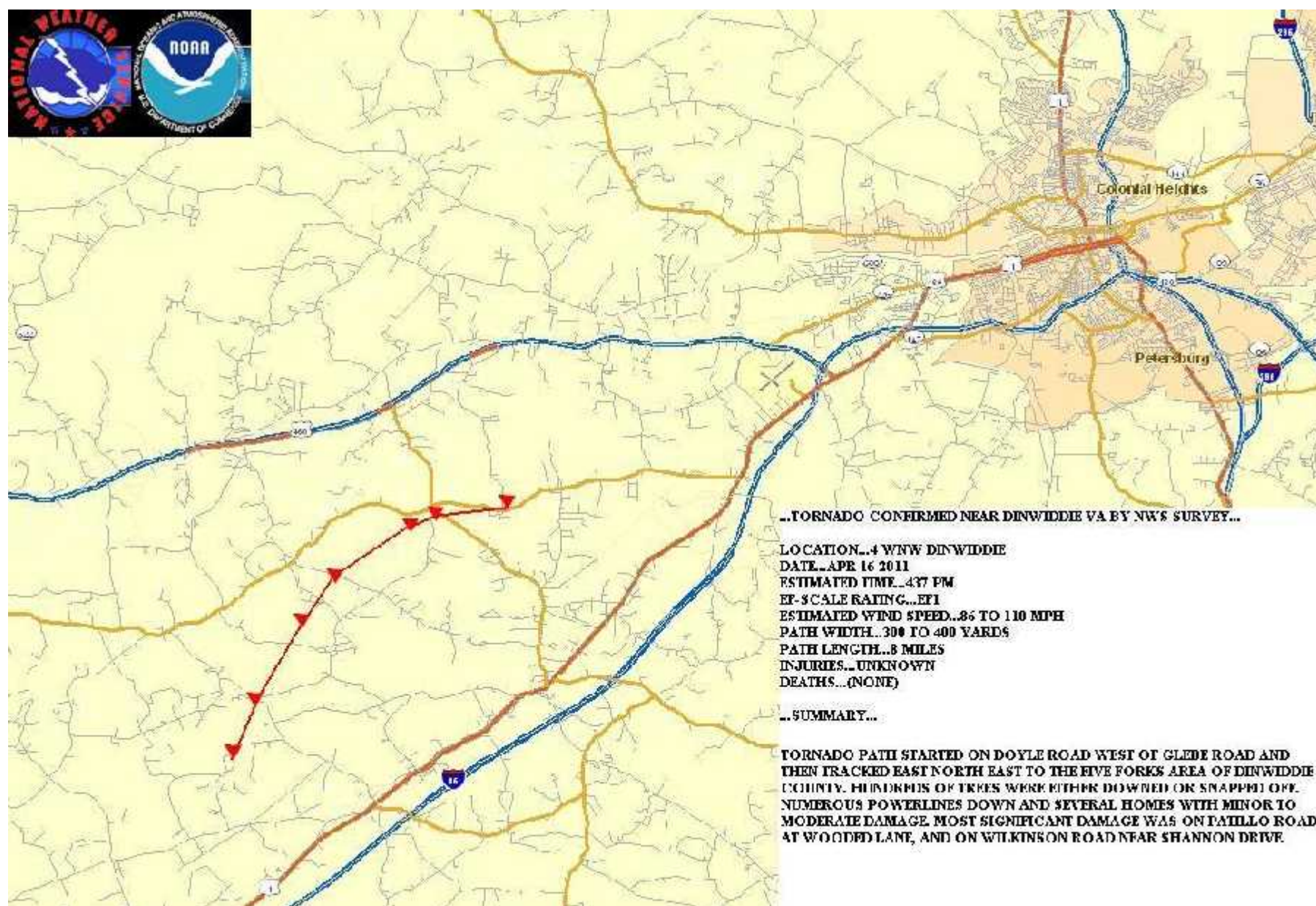


Below is information on the storm damage surveys conducted by the National Weather Service in Wakefield, VA.

Appreciation is extended to county officials and property owners who allowed us onto their properties to document and photograph the damage they experienced.

Confirmed Tornadoes: [EF:1 Dinwiddie County, VA](#), [EF:3-Bertie County, NC](#), [EF-2 Isle of Wight](#), [EF-1 Currituck County, NC](#), [EF-3 Gloucester County](#)[storm track includes Surry Co, crosses James&York Rivers and ends Mathews County], [EF-2 Middlesex County](#), [EF-1 Western Middlesex](#), [EF-1 Lunenburg County VA](#), [EF-1 Southampton County VA](#), [EF-1 Northampton County, NC](#), [EF-1 Southampton County, VA](#)

Tornado #1- Dinwiddie County, VA

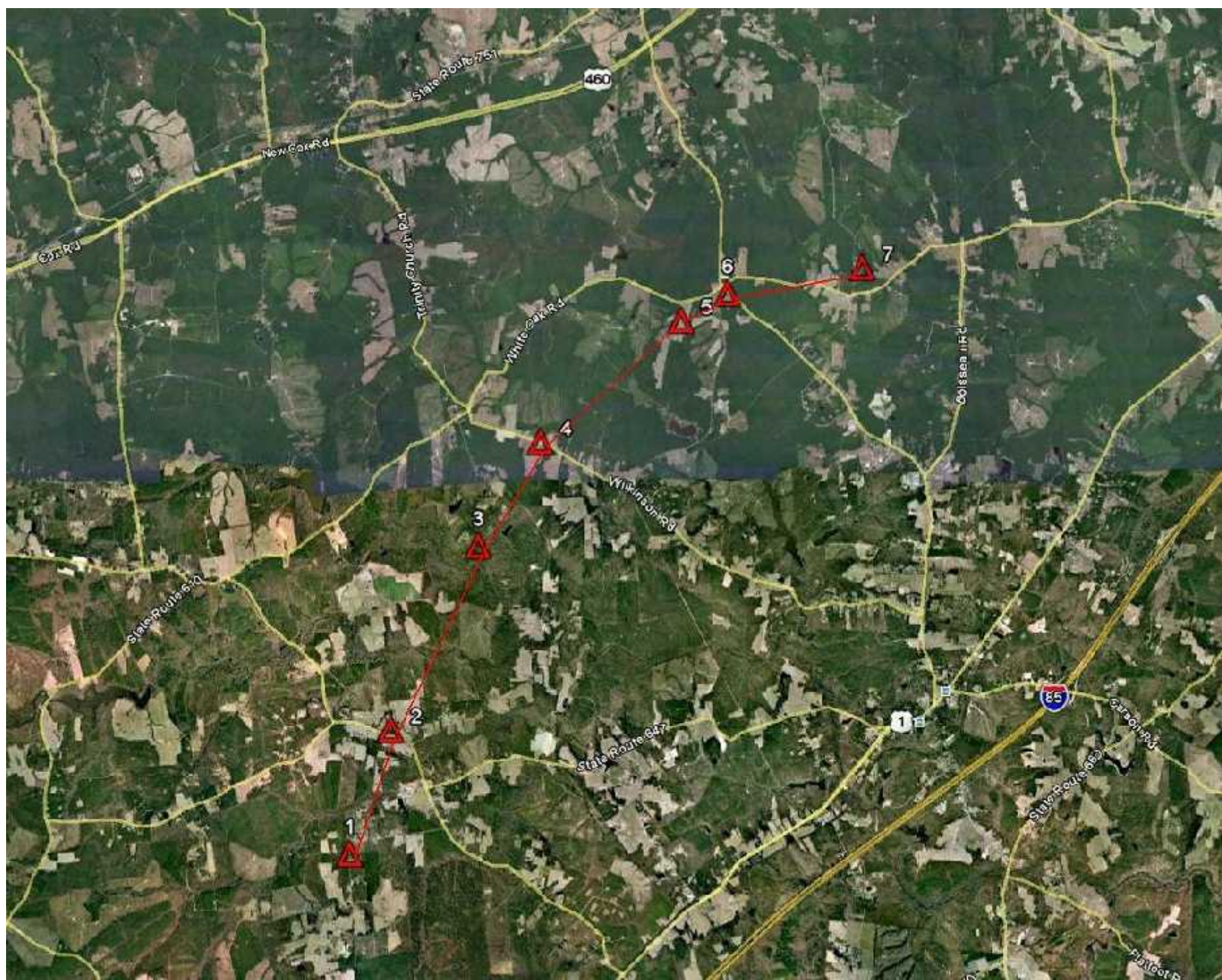


..TORNADO CONFIRMED NEAR DINWIDDIE VA BY NWS SURVEY...

LOCATION...4 WNW DINWIDDIE
DATE...APR 16 2011
ESTIMATED TIME...4:37 PM
EF-S SCALE RATING...EF1
ESTIMATED WIND SPEED...86 TO 110 MPH
PATH WIDTH...300 TO 400 YARDS
PATH LENGTH...8 MILES
INJURIES...UNKNOWN
DEATHS...(NONE)

..SUMMARY...

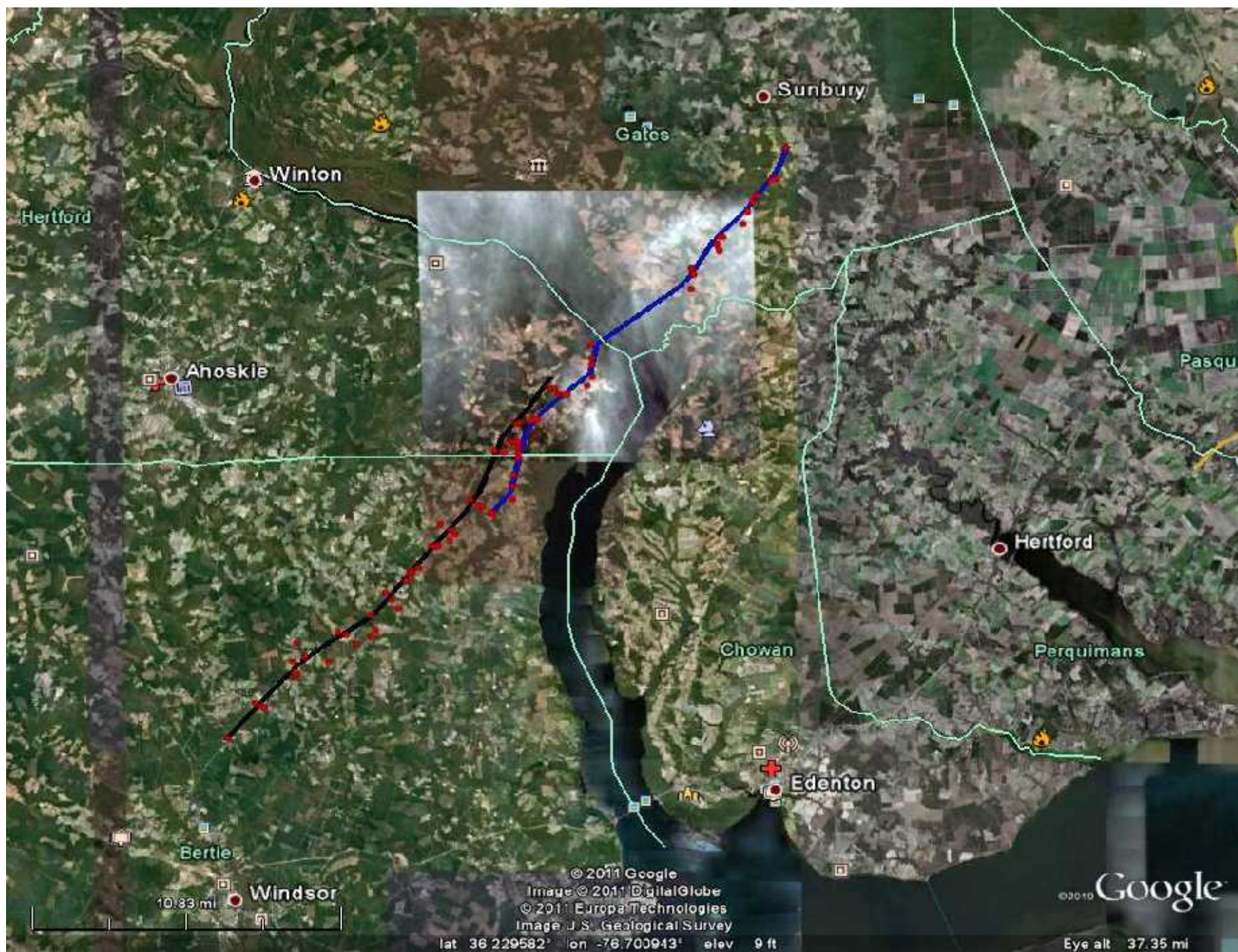
TORNADO PATH STARTED ON DOYLE ROAD WEST OF GLEBE ROAD AND THEN TRACKED EAST NORTH EAST TO THE FIVE FORKS AREA OF DINWIDDIE COUNTY. HUNDREDS OF TREES WERE EITHER DOWNED OR SNAPPED OFF. NUMEROUS POWERLINES DOWN AND SEVERAL HOMES WITH MINOR TO MODERATE DAMAGE. MOST SIGNIFICANT DAMAGE WAS ON PATILLO ROAD AT WOODED LANE, AND ON WILKINSON ROAD NEAR SHANNON DRIVE.





Picture 1- WWBT-TV

Tornado #2 & #3 - Bertie County, NC



Tornado #2

...BERTIE COUNTY NC TORNADO SURVEY RESULTS...

LOCATION...1 MILE SOUTH OF ASKEWVILLE NC NORTHEAST TO ABOUT 3
MILES EAST OF HARRELLSVILLE
DATE...APRIL 16 2011
ESTIMATED TIME...655 PM
EF-SCALE RATING...EF3 /PRELIMINARY...PENDING FURTHER ANALYSIS/
ESTIMATED WIND SPEED...136 TO 165 MPH
PATH WIDTH...1/2 TO 3/4 MILE
PATH LENGTH...18.0 MILES
INJURIES...50 /ESTIMATED/
DEATHS...12 /CONFIRMED/

...SUMMARY...

TORNADO FIRST TOUCHED DOWN ABOUT 1 MILE SOUTH OF ASKEWVILLE
NC...DOING MINOR TREE AND BUILDING DAMAGE. THE TORNADO THEN TRACKED
CONTINUOUSLY FOR NEARLY 19 MILES...FINALLY LIFTING EAST OF
HARRELLSVILLE. FOR MUCH OF THE TORNADO`S LIFE...THE PATH WIDTH WAS
ONE HALF TO NEARLY 3/4 MILES WIDE. EF2 AND EF3 DAMAGE WAS WIDESPREAD
FROM JUST WEST OF ASKEWVILLE...NORTHEAST TO JUST WEST OF
COLERAIN...THEN GRADUALLY DECREASING AS THE TORNADO CROSSED INTO
HERTFORD COUNTY. NUMEROUS HOMES WERE DESTROYED...AND MANY OTHERS
SUFFERED VARYING DEGREES OF DAMAGE. IN ADDITION...THERE WAS
EXTENSIVE DAMAGE TO TREES AND WOODED AREAS IN THE PATH OF THE
TORNADO.

A SPLIT IN THE TORNADO DAMAGE PATHS JUST NORTH OF COLERAIN SUGGESTS
THAT THE TORNADO UNDERWENT A CYCLIC RE-DEVELOPMENT...WITH 2
TORNADOES ON THE GROUND SIMULTANEOUSLY FOR A PERIOD OF ABOUT 5
MILES. THE SECOND TORNADO...WITH A DAMAGE PATH JUST TO THE EAST OF
THE ORIGINAL...STRONGER TORNADO...IS DETAILED BELOW.

&&

Tornado # 3

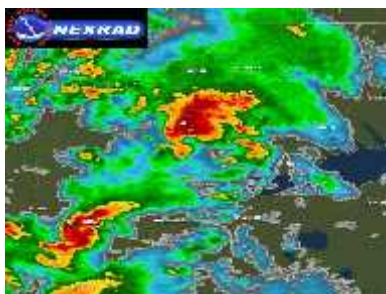
LOCATION...1 MILE NW OF COLERAIN NORTHEAST TO ABOUT 4 MILES EAST OF

HARRELLSVILLE
DATE...APRIL 16 2011
ESTIMATED TIME...705 PM
EF-SCALE RATING...EF2
ESTIMATED WIND SPEED...111 TO 135 MPH
PATH WIDTH...300 TO 500 YARDS
PATH LENGTH...17.8 MILES
INJURIES...UNKNOWN
DEATHS...NONE

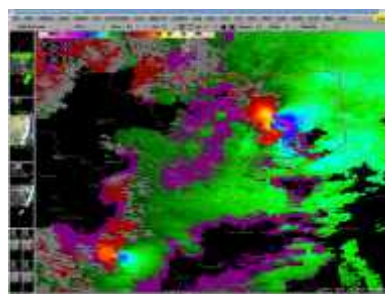
...SUMMARY...

A DISTINCT SEPARATION IN THE DAMAGE PATHS NW OF COLERAIN SUGGESTS THAT A SECOND TORNADO FORMED JUST NW OF COLERAIN...AND TRACKED NORTHEAST NEARLY PARALLEL TO THE ORIGINAL TORNADO. NORTH OF COLERAIN...THE TORNADO TRACKED PARALLEL RT. 45 FOR ABOUT 1 MILE...THEN CONTINUED NORTHEAST IN SOUTHEAST HERTFORD COUNTY...JUST WEST OF THE CHOWAN RIVER. THE TORNADO CROSSED THE CHOWAN RIVER WHILE CONTINUING TO WEAKEN. THE FINAL VERY MINOR DAMAGE WAS NOTED A COUPLE MILES NORTHEAST OF HOBBSVILLE TO THE WEST OF ROUTE 32. IN THE BERTIE COUNTY PORTION OF THE SECOND TORNADO...SEVERAL HOMES AND OTHER BUILDINGS WERE DAMAGED. POULTRY HOUSES AND OTHER FARM EQUIPMENT WERE ALSO DAMAGED. MANY TREES DOWN OR SNAPPED OFF. MOST OF THE DAMAGE IN GATES COUNTY WAS TO TREES. NUMEROUS TREES WERE DOWNED...WITH MANY OTHERS SNAPPED AT THE TOP. A MOBILE HOME ROOF WAS BLOWN OFF...AND THERE WAS MINOR DAMAGE TO SOME FARM EQUIPMENT...AND A COUPLE OTHER HOMES. THE DAMAGE IN GATES COUNTY WAS EF0 AND EF1...WITH THE SEVERITY OF THE DAMAGE DECREASING AS THE TORNADO MOVED NORTHEAST.

Bertie County, NC Tornado Pictures - Taken by NWS Wakefield, VA

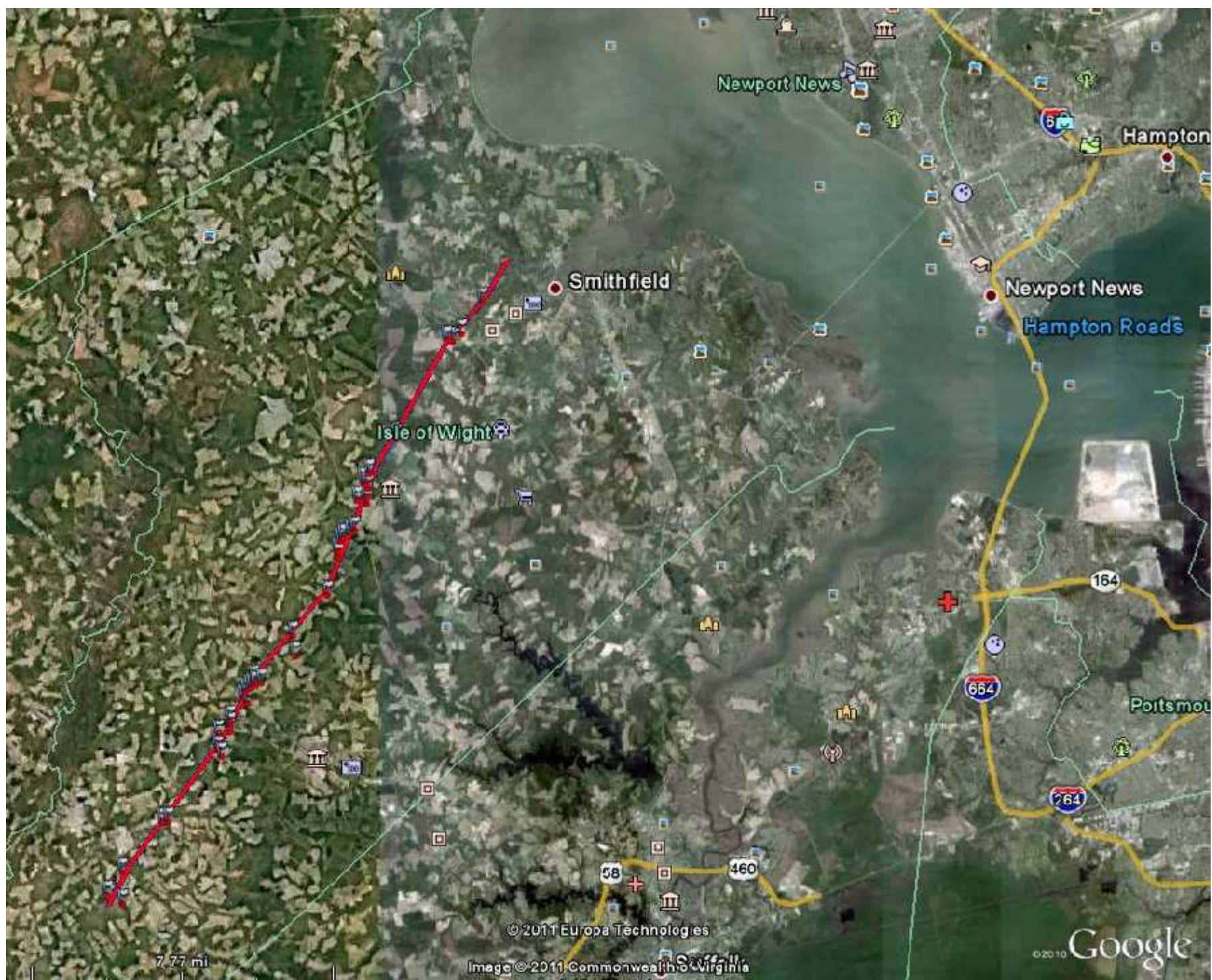


This is the view from
KAKQ Radar at 6:57pm EDT



The corresponding 6:57 EDT [SRM](#)
Imagery from KAKQ Radar (Wakefield)





Tornado #4 Isle of Wight County, VA

0727 PM TORNADO 1 SW ISLE OF WIGHT 36.90N 76.72W
04/16/2011 ISLE OF WIGHT VA NWS STORM SURVEY

NWS STORM SURVEY DETERMINED DAMAGE CONSISTENT WITH AN EF-2 TORNADO IN ISLE OF WIGHT COUNTY. THE TORNADO DAMAGE WAS ALONG A NEARLY CONTINUOUS 20 MILE DAMAGE PATH FROM EAST OF WALTERS TO JUST SOUTHWEST OF SMITHFIELD. MANY TREES WERE DOWNED...SHEARED OFF OR TOPPED. MORE THAN 2 DOZEN HOMES WERE DAMAGED...A FEW SUSTAINING SIGNIFICANT DAMAGE. SEVERAL FARMS WERE IMPACTED...WITH FARM EQUIPMENT PICKED UP AND TOSSED AROUND.



photo by Aaron Graham

Tornado #5 Currituck County, NC

...TORNADO CONFIRMED IN SOUTHERN CURRITUCK COUNTY...
LOCATION...NEAR HARBINGER
DATE...APR 16 2011
ESTIMATED TIME...930 PM
EF-SCALE RATING...EF1

ESTIMATED WIND SPEED...86 TO 110 MPH

PATH WIDTH...100 TO 200 YARDS

PATH LENGTH...2.2 MILES

INJURIES...NONE

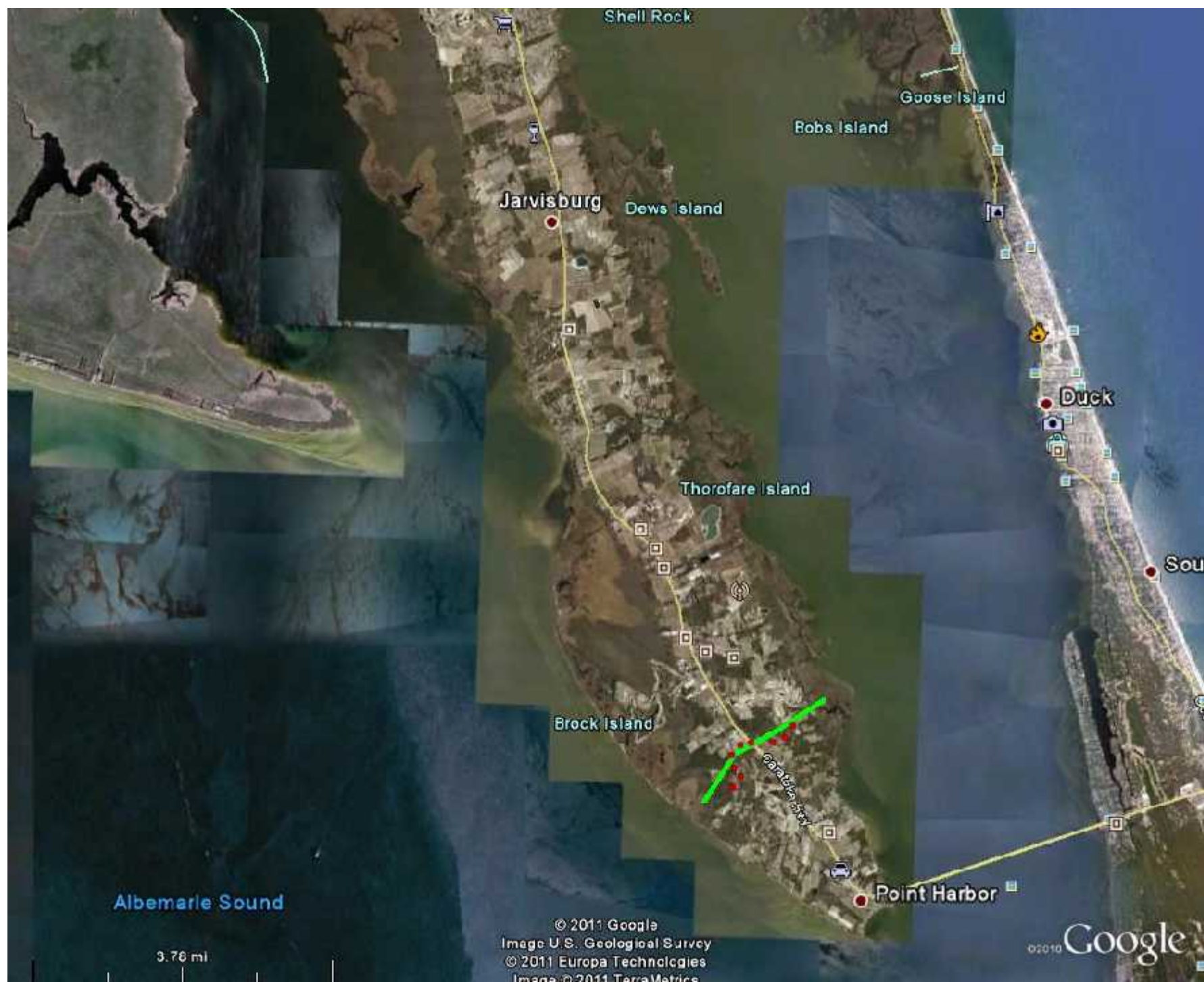
DEATHS...NONE

...SUMMARY...

TORNADO APPARENTLY MOVED INLAND OFF THE ALBEMARLE SOUND AND

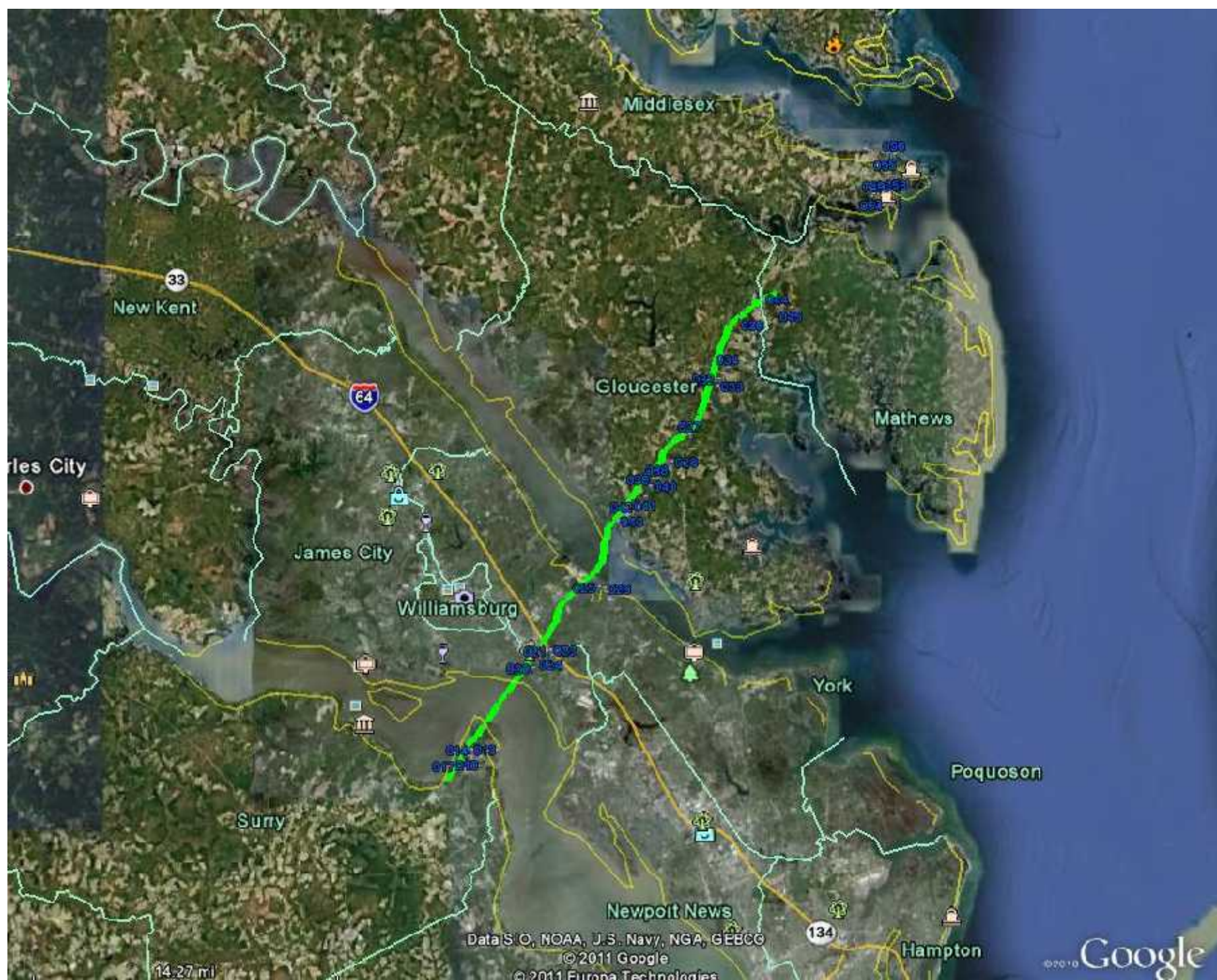
CONTINUED EAST-NORTHEAST ACROSS RT. 158...AND THEN TOWARD CURRITUCK
SOUND. NUMEROUS TREES DOWN OR SNAPPED OFF. DAMAGE TO SEVERAL

COMMERCIAL BUILDINGS AND A FEW HOMES. VEHICLES WERE OVERTURNED...AND
SEVERAL BOATS WERE LIFTED ACROSS RT. 158.





Tornado #6 Surry County to Mathews County...including Gloucester County, VA





photos above by VA State Police

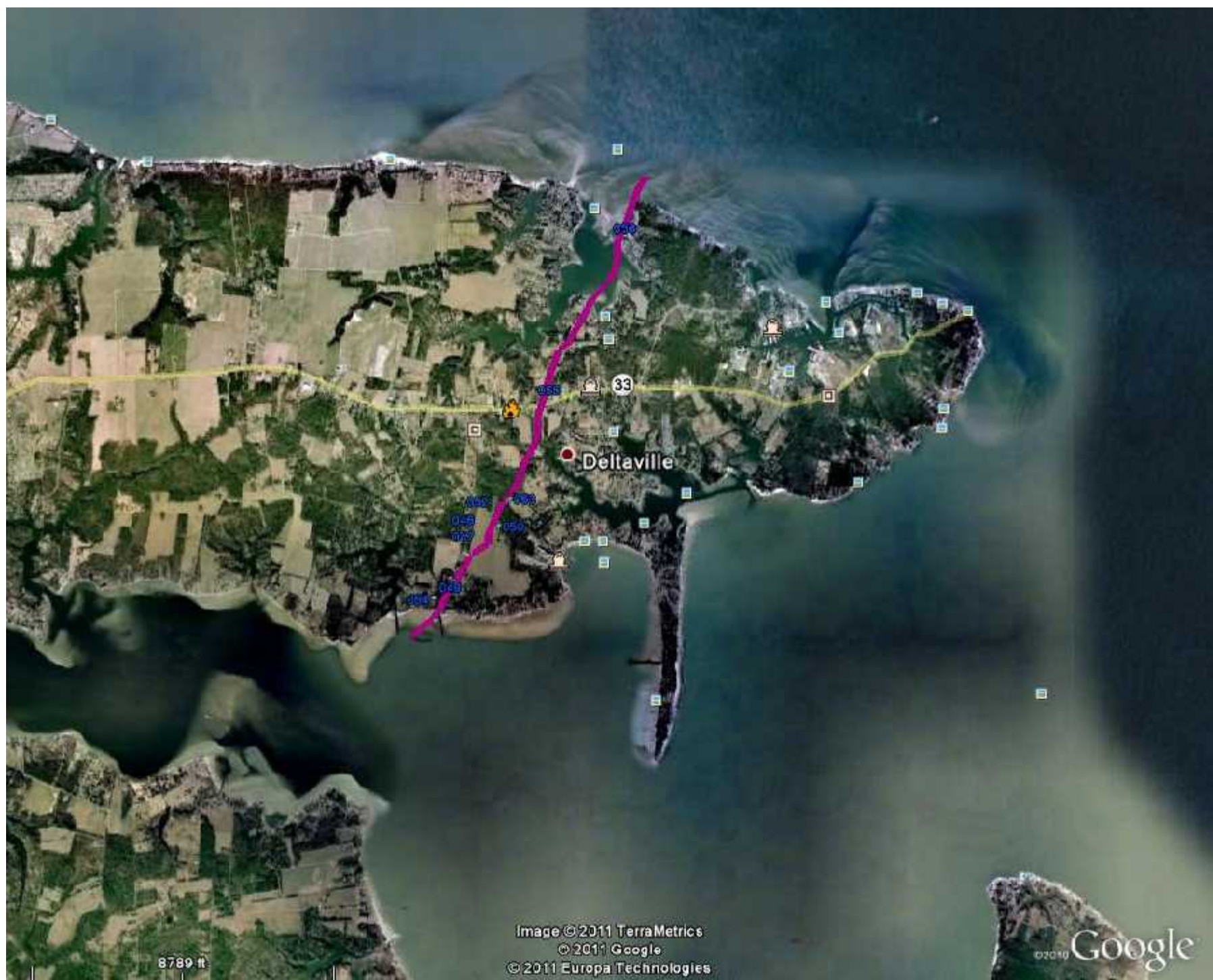
[Download Google Earth kmz file of tornado track here](#)

...SURREY JAMES CITY YORK GLOUCESTER AND MATHEWS COUNTIES SURVEY
RESULTS...
LOCATION...FROM JUST SOUTH OF THE SURREY NUCLEAR POWER PLANT TO
NORTHEAST OF ROUTE 14 IN MATHEWS COUNTY
DATE...APR 16 2011
ESTIMATED TIME...645 PM TO 720 PM
EF-SCALE RATING...EF3 /PRELIMINARY...PENDING FURTHER ANALYSIS...
ESTIMATED WIND SPEED...136 TO 165 MPH
PATH WIDTH...FROM 200 YARDS TO A HALF MILE
PATH LENGTH...APPROX. 30 MILES
INJURIES...24
DEATHS...2
...SUMMARY...
NWS STORM SURVEY DETERMINED THE DAMAGE WAS CONSISTENT WITH AN EF3
TORNADO. THE TORNADO DEVELOPED JUST SOUTH OF THE SURREY NUCLEAR POWER
PLANT AND THEN CONTINUED ACROSS THE JAMES RIVER AND THROUGH THE
KINGSMILL SECTION OF JAMES CITY COUNTY. THE TORNADO THEN MOVED
NORTHEAST ACROSS THE YORK RIVER INTO SOUTHERN GLOUCESTER COUNTY. THE
WORST DAMAGE CONSISTENT WITH AN EF3 RATING WAS NEAR CLOPTON IN
GLOUCESTER COUNTY. THE TORNADO THEN EVENTUALLY LIFTED IN
SOUTHWESTERN MATHEWS COUNTY. THE TORNADO HAD A NEARLY CONTINUOUS
DAMAGE PATH RANGING IN WIDTH FROM AROUND 200 YARDS TO AS MUCH AS A
HALF MILE WIDE IN GLOUCESTER COUNTY. OVER 200 HOMES WERE DAMAGED
WITH MANY OF THESE HOMES SEVERELY DAMAGED. NUMEROUS TREES WERE
DOWNED OR SHEARED OFF.

Pictures - Taken by NWS Wakefield, VA



Tornado #7 Middlesex County, VA





...MIDDLESEX COUNTY SURVEY RESULTS...

LOCATION...FROM FISHING BAY SOUTH OF DELTAVILLE TO THE RAPPAHANNOCK
RIVER

DATE...APR 16 2011

ESTIMATED TIME...725 PM TO 740 PM

EF-SCALE RATING...EF2

ESTIMATED WIND SPEED...111 TO 135 MPH

PATH WIDTH...A QUARTER MILE

PATH LENGTH...3 MILES

INJURIES...0

DEATHS...0

...SUMMARY...

NWS STORM SURVEY DETERMINED THE DAMAGE WAS CONSISTENT WITH AN EF2
TORNADO. THE TORNADO DEVELOPED IN SOUTHEASTERN MIDDLESEX COUNTY
ALONG THE PLANKATANK RIVER MOVING NORTHEAST THROUGH DELTAVILLE THEN
OFF THE LAND AND DISSIPATING OVER THE RAPPAHANNOCK RIVER. 95 HOMES
WERE DAMAGED IN DELTAVILLE WITH MANY BEING SEVERELY DAMAGED.
NUMEROUS TREES WERE DOWNED AND MANY SHEARED OFF. THE TORNADO HAD A
PATH WIDTH AROUND A QUARTER MILE ALONG ITS CONTINUOUS DAMAGE PATH.

Tornado #8 Western Middlesex County, VA



Above image is interpretation based on report below. It is NOT tornado track but area of damage.

...WESTERN MIDDLESEX COUNTY SURVEY RESULTS...

LOCATION...CORBIN HALL FARM TO WARNER ROAD

DATE...APR 16 2011

ESTIMATED TIME...630 PM TO 635 PM

EF-SCALE RATING...EF1

ESTIMATED WIND SPEED...86 TO 110 MPH

PATH WIDTH...A QUARTER MILE

PATH LENGTH...2 MILES

INJURIES...0

DEATHS...0

...SUMMARY...

NWS STORM SURVEY DETERMINED THE DAMAGE WAS CONSISTENT WITH AN EF1

TORNADO. THE TORNADO TRACKED FROM LAGRANGE CREEK TO FAMILY LANE.

THIS TORNADO DESTROYED 1 HOME HOME AND A GRAIN SILO. NUMEROUS TREES WERE DOWNED AND SHEARED OFF. THE TORNADO HAD A PATH WIDTH AROUND A QUARTER MILE AND MAY HAVE HAD MULTIPLE VORTEXES IN THE MAIN FUNNEL.



Tornado #9 Lunenburg County, VA

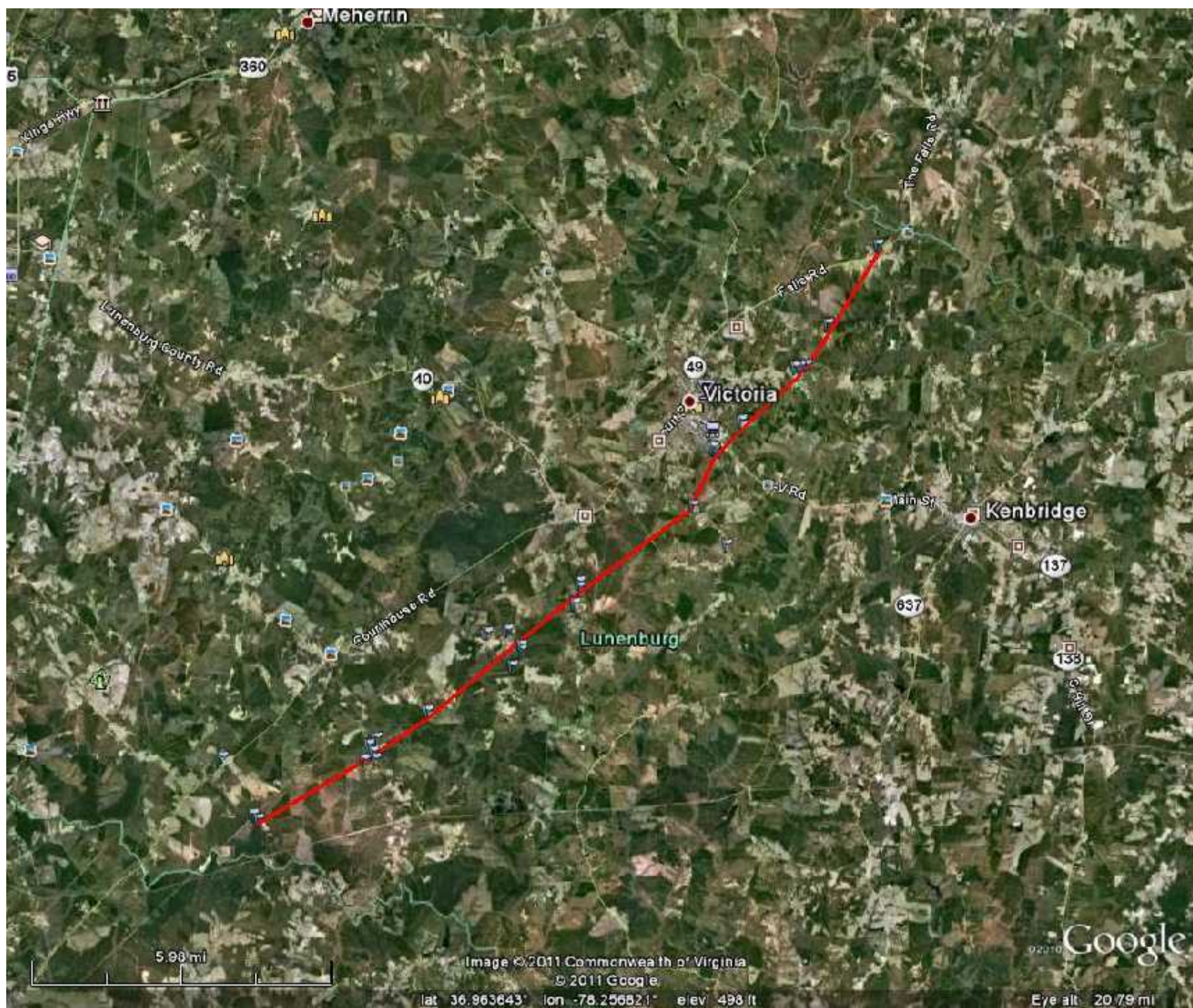


Image © 2011 Commonwealth of Virginia
© 2011 Google
lat 36.963643° lon -78.256821° elev 498 ft

Google
Eye alt 20.79 mi

...LUNENBURG COUNTY TORNADO SURVEY RESULTS...
LOCATION...ROCKY MILL RD TO JUST SOUTH OF THE FALLS

DATE...APR 16 2011
ESTIMATED TIME...330 PM TO 400 PM
EF-SCALE RATING...EF1
ESTIMATED WIND SPEED...86 TO 110 MPH
PATH WIDTH...200 TO 300 YARDS WIDE
PATH LENGTH...17.2 MILES
INJURIES...0
DEATHS...0

...SUMMARY...

TORNADO DAMAGE WAS FIRST NOTED IN SOUTHWEST LUNENBURG COUNTY...NEAR THE MECKLENBURG COUNTY LINE...ON ROCKY MILL RD. THE TORNADO CONTINUED NORTHEAST TO THE EAST OF RT. 49 FOR ABOUT 17 MILES...BEFORE LIFTING NEAR THE LUNENBURG/NOTTOWAY COUNTY LINE NEAR THE FALLS. MOST OF THE DAMAGE WAS TO TREES...WITH NUMEROUS TREES DOWN OR SHEARED OFF. A FEW HOMES WERE DAMAGED...AS WERE A NUMBER OF SHEDS AND OUTBUILDINGS. THE MOST INTENSE DAMAGE WAS NOTED IN VICINITY OF REHOBETH ROAD...SOUTHEAST OF REHOBETH. THE TORNADO THEN CONTINUED NORTHEAST ACROSS THE EAST AND NORTH SIDES OF VICTORIA. DAMAGE TO TREES AND OUTBUILDINGS WAS NOTED AT VICTORIA GOLF CLUB.

Tornado #10 Southampton County, VA



...SOUTHAMPTON COUNTY VA TORNADO SURVEY RESULTS...

LOCATION...SOUTH OF RT. 58 BETWEEN STATE ROUTE 659 AND 3 CREEKS RD.

DATE...APR 16 2011

ESTIMATED TIME...550 PM

EF-SCALE RATING...EF1

ESTIMATED WIND SPEED...86 TO 110 MPH

PATH WIDTH...200 TO 300 YARDS WIDE

PATH LENGTH...2.0 MILES

INJURIES...0

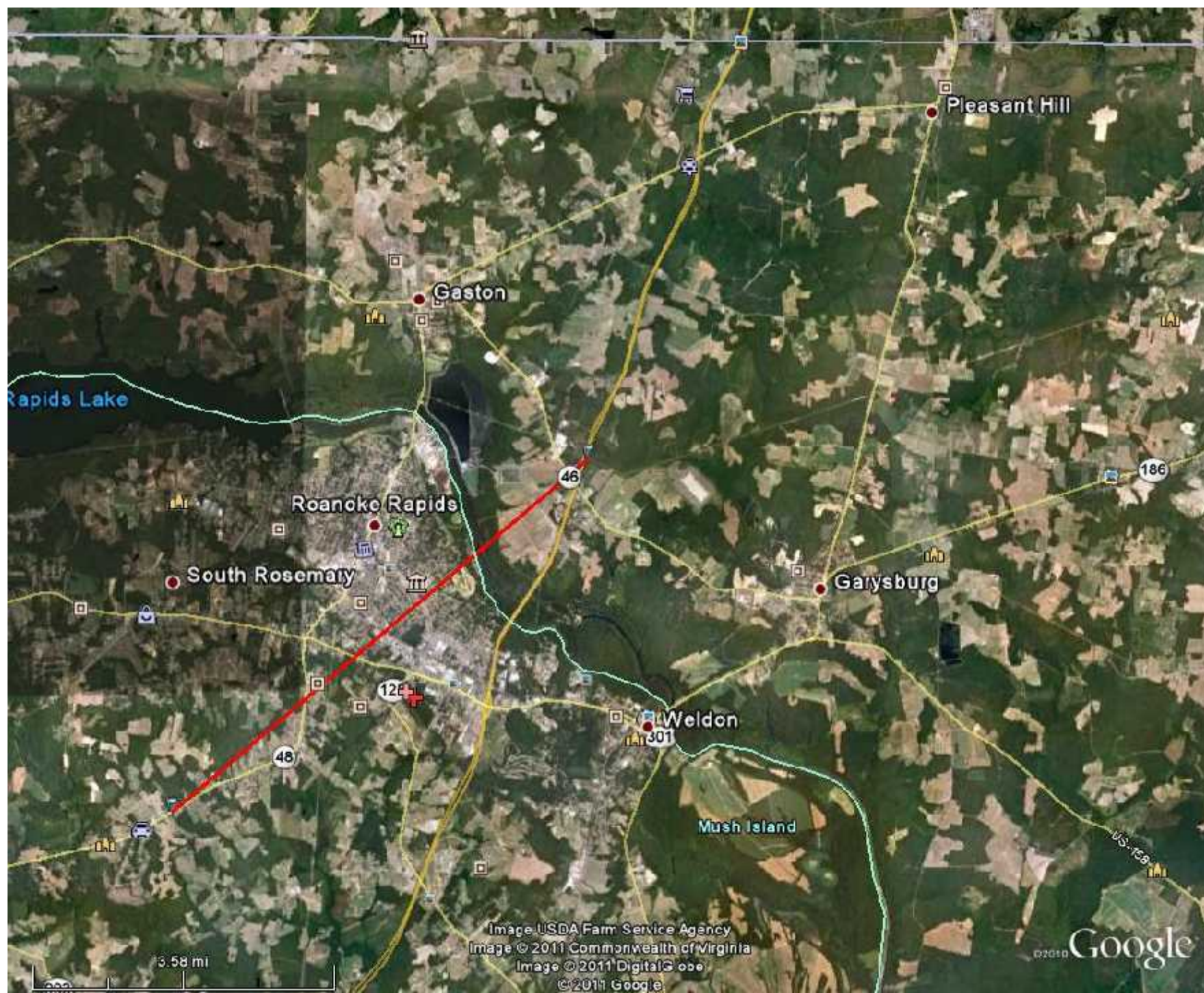
DEATHS...0

...SUMMARY...

STORM SURVEY CONDUCTED THIS AFTERNOON SHOWED THAT A BRIEF TORNADO TOUCHED DOWN IN SOUTHWEST SOUTHAMPTON COUNTY...PRODUCING EF0 AND WEAK EF1 DAMAGE. NUMEROUS TREES WERE SNAPPED OFF...AND A FEW STRUCTURES SUSTAINED DAMAGE. THE MOST SIGNIFICANT DAMAGE WAS TO A FARM EQUIPMENT SHELTER AND A ROOF ON A HOME.



Tornado #11 Northampton County, NC



...NORTHAMPTON COUNTY NC TORNADO SURVEY RESULTS...
LOCATION...JUST SOUTH OF ROANOKE RAPIDS TO JUST NORTH OF THE
INTERSECTION OF I-95 AND RT. 46
DATE...APR 16 2011
ESTIMATED TIME...525 PM
EF-SCALE RATING...EF1
ESTIMATED WIND SPEED...86 TO 110 MPH
PATH WIDTH...200 TO 300 YARDS WIDE
PATH LENGTH...6.5 MILES
INJURIES...0
DEATHS...0
...SUMMARY...
STORM SURVEY CONDUCTED BY WFO RALEIGH INDICATED THAT A
TORNADO...WHICH ORIGINALLY TOUCHED DOWN JUST SOUTH OF ROANOKE
RAPIDS...MOVED NORTHEAST INTO NORTHAMPTON COUNTY. THE TORNADO
PRODUCED EF1 DAMAGE...WITH A NUMBER OF TREES SNAPPED...AND SOME ROOF
DAMAGE TO A HOME. THE TORNADO LIFTED JUST NORTH OF THE I-95 TO RT.
46 INTERSECTION.

Tornado #12 Southampton County, VA



